



Installation Instructions

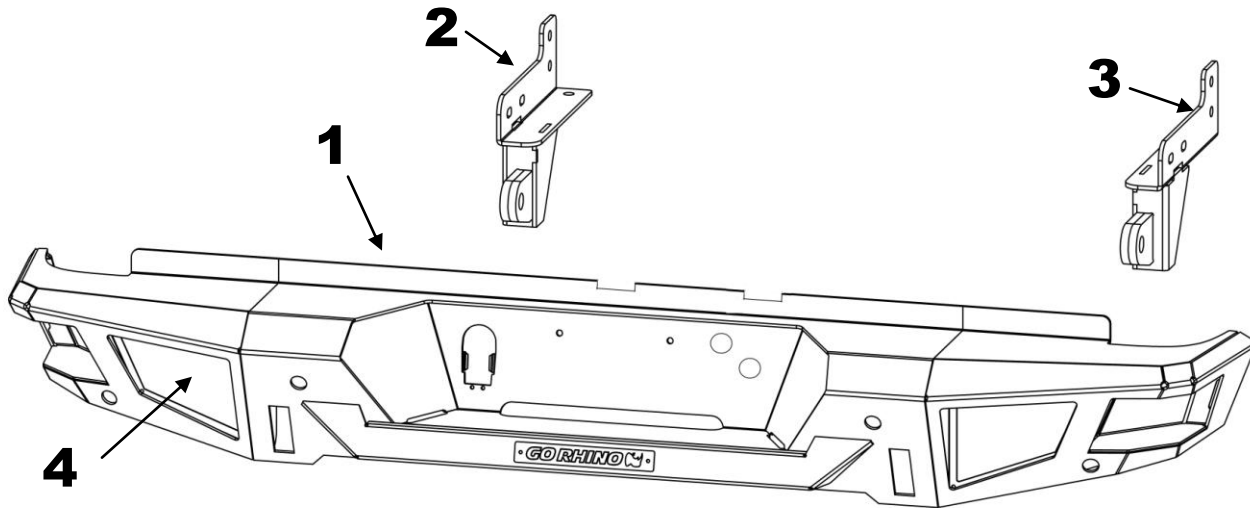
BR20 Rear Bumper Replacement Part # 28173T

Chevrolet Silverado 2500HD & 3500HD 2/4WD

Parts List

Item	Qty.	Part #	Description	Item	Qty.	Description	Torque
1	1	28173T0AB	Bumper Replacement Shell	9	8	1/2" x 1 1/2" Hex Bolt	65 ft. lbs.
2	1	28173T0DB	Driver Side Frame Bracket	10	2	1/2" x 2" Hex bolt	65 ft. lbs.
3	1	28173T0DB	Passenger Side Frame Bracket	11	20	1/2" Flat Washer	
4	2	28173T5AB	Blank Plate	12	10	1/2" Lock Washer	
5	2	ASE-L01	LED License Plate Light	13	10	1/2" Hex Nut	
6	2	28173T5GA	Sensor Bezel Plate (inner)	14	10	10-32 x 3/4" Button Head Bolt	30 in. lbs.
7	1	28173T5FA	Sensor Bezel Plate (passenger outer)	15	10	10-32 Nylon-Insert Lock Nut	
8	1	28173T5FA	Sensor Bezel Plate (driver outer)	16	5	Round Plug	

ILLUSTRATION #1



Tool Required:

13mm, 15mm, 18mm, 21mm, 3/8" & 3/4" Sockets
13mm, 15mm, 18mm, 21mm. 3/8" & 3/4" Wrenches
Slotted Blade Screw Driver
1/8" Hex Key
Ratchet, Ratchet Extensions & Swivel Joint Adapter
12V Circuit Tester

Approximate installation time: 90 min

IMPORTANT INSTALLATION NOTES AND SUGGESTIONS

Read the installation instructions completely and verify that all of the parts listed are accounted for. If you have defective, missing or damaged parts or need assistance, please contact Go Rhino Products for fast, friendly customer service at: (888) 427-4466 or email: sales@gorhino.com

Verify that the tailgate does not come in contact with the bumper replacement when opening and in the lowered position, before final tightening all nuts and bolts. If necessary, loosen the nuts and bolts to adjust the bumper replacement.

If you are replacing a bumper with rear Park Assist, the sensor detection zone will be altered with use of this bumper replacement.

The spare tire winch access cover and lock in the factory bumper will not be reinstalled in the bumper replacement, as the winch will now be accessed through the hole provided in the bumper replacement.

To maintain and care for this product keep it clean and do not use abrasive cleaners or polish waxes. Texture Painted Finish: Mild liquid detergent may be used. Polished Stainless & Semi-Gloss Painted Finishes: We recommend using only non-abrasive automotive wax such as pure carnauba to avoid scratches and rust.

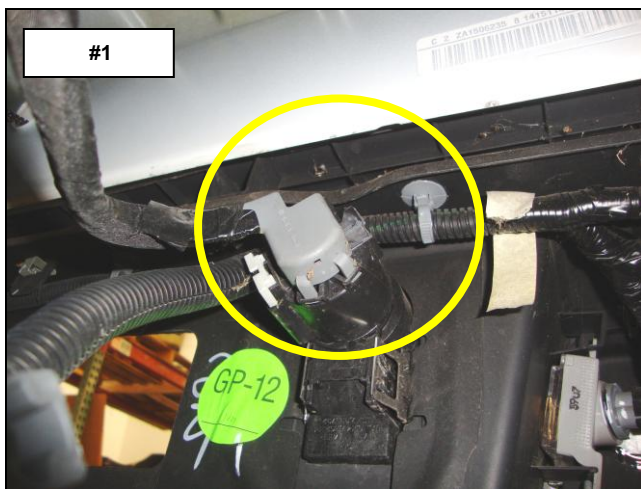
Factory Bumper Removal

Step-1 Lower and remove the spare tire to access the factory bumper attachment bolts and vehicle wiring.

Step-2 Disconnect the vehicle battery or batteries.

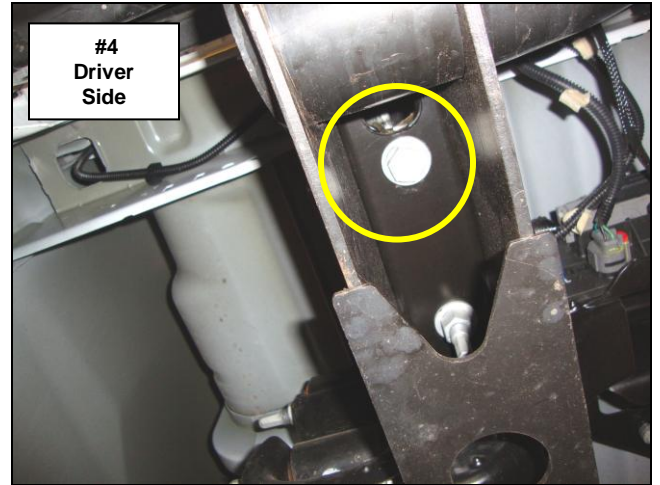
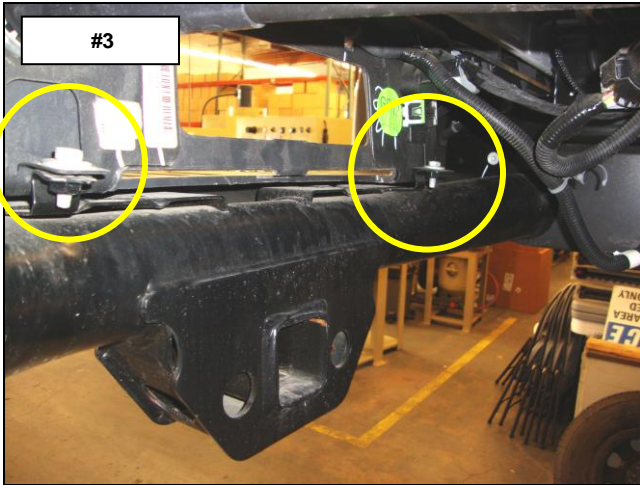
Step-3 Disconnect the trailer plug wiring harness from the factory bumper, (Photo 1).

Step-4 Disconnect the bumper wiring harness from the vehicle, (Photo 2).

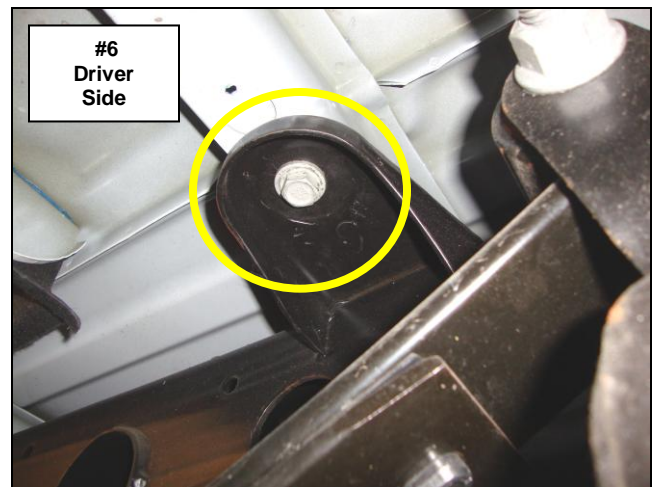
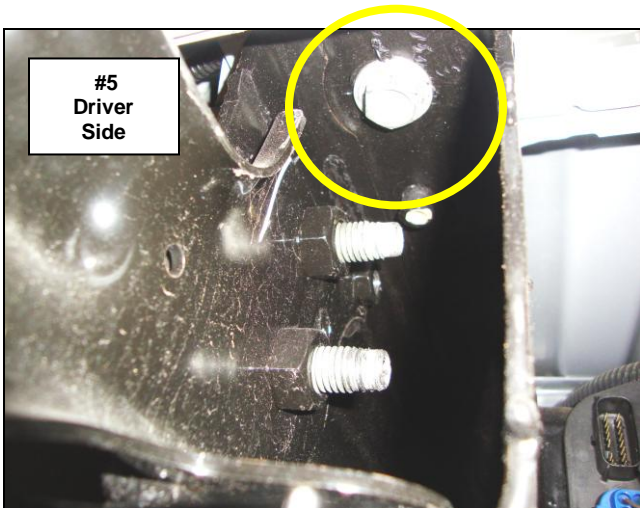


Step-5 Remove the M8 bolts (1) per side securing the factory bumper to the receiver hitch, (Photo 3).

Step-6 Remove the M14 bolts (1) per side securing the receiver hitch and factory bumper bracket to the bottom of the frame, (Photo 4).

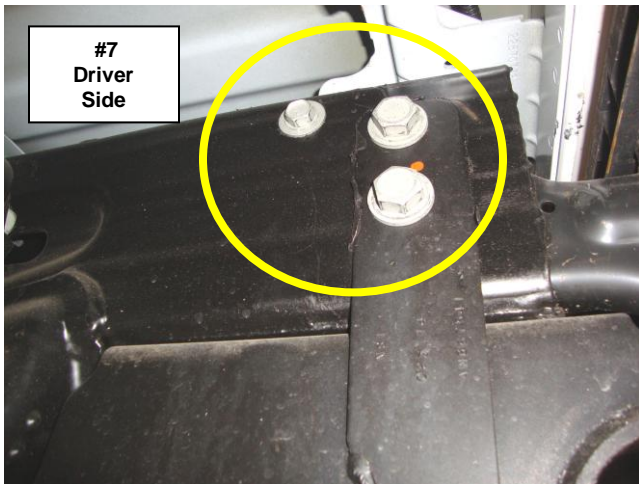


Step-7 Loosen the M12 bolts (2) per side toward the end of the frame securing the bed, (Photo 5 & 6).



Step-8 Remove the M10 bolt (1) per side and M14 bolts (2) per side securing the bumper brackets to the frame, (Photo 7).

Step-9 With assistance, remove the factory bumper and brackets by slightly lifting the bed off the frame, and pulling the bumper rearward away from the vehicle, (Photo 8). Tighten the bolts securing the bed.



Step-10 Remove the license plate, disconnect the license plate lights, and If equipped disconnect the backup sensors from the factory bumper wiring harness.

Step-11 Remove the wiring harness from the factory bumper.

BR20 Bumper Replacement Installation

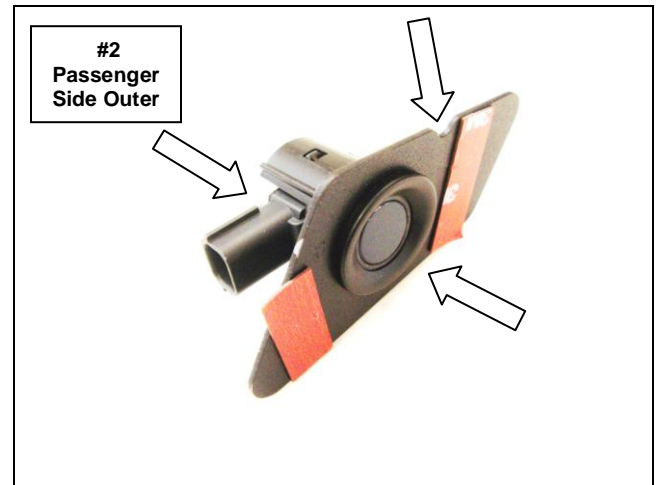
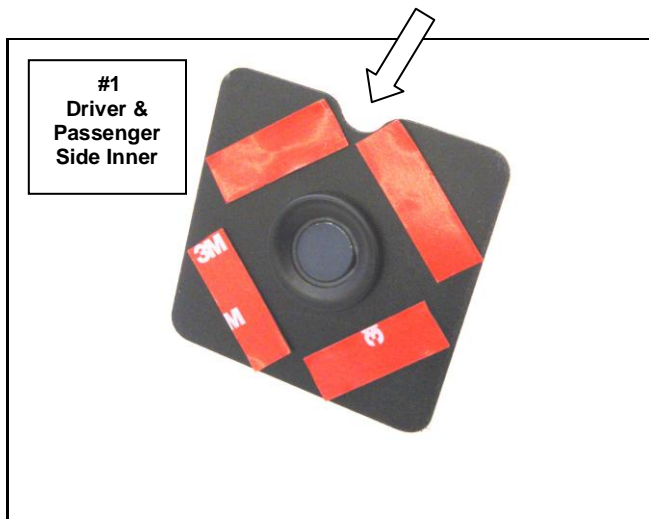
Note: if your vehicle is not equipped with rear **Park Assist** install the supplied round plugs in the holes in the replacement bumper and proceed to Step 7.

Note: If you are replacing a bumper with rear **Park Assist**, the sensor detection zone will be altered with use of this bumper replacement.

Step-1 If the vehicle is equipped with rear **Park Assist**, remove each sensor from the bezel by gently spreading the bezel tabs and pulling out on the back of the sensors. Note: Do not push on the front of the sensor as this may damage the sensor.

Step 2 Remove the sensor bezels from the factory bumper by depressing the (4) tabs around the base and pushing the bezel out through the front of the bumper. Note: The sensors and bezels have to be positioned in the replacement bumper in the same location (inner and outer), (driver and passenger) as removed from the factory bumper.

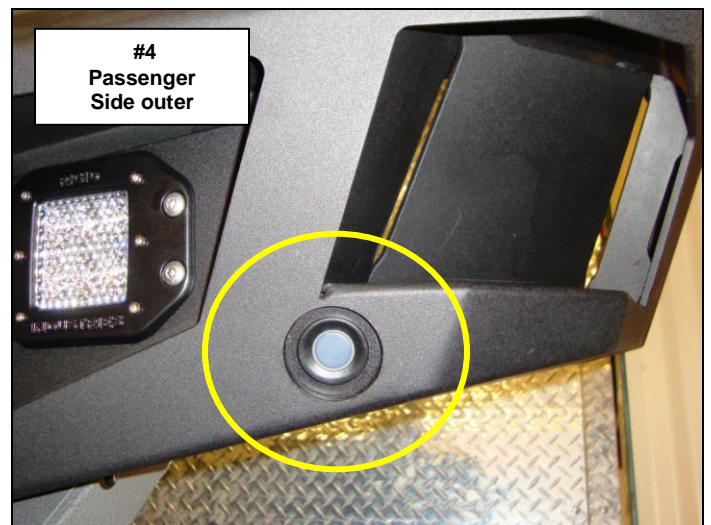
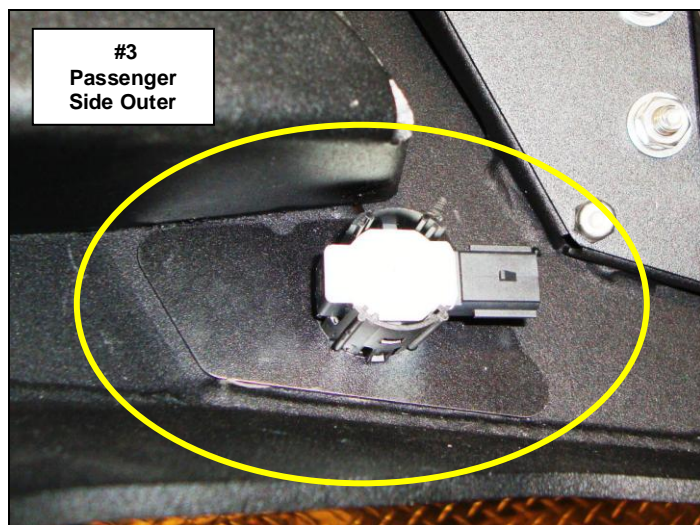
Step-3 Install the sensor bezels and sensors in the (inner and outer) bezel plates, (Photo 1 & 2). Line up the protrusions on the bezel with the profile in the bezel plate; push the bezel through the profile in the plate until the tabs around the base lock in position, then install the sensor in the bezel. Note: The notch in the bezel plate designates the top.



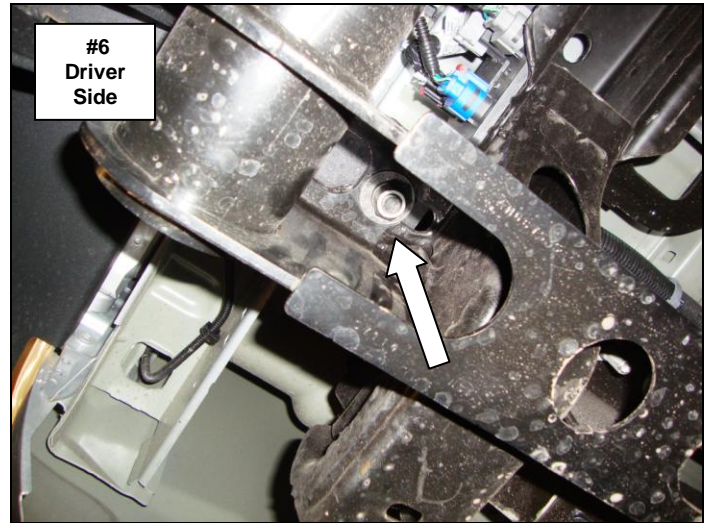
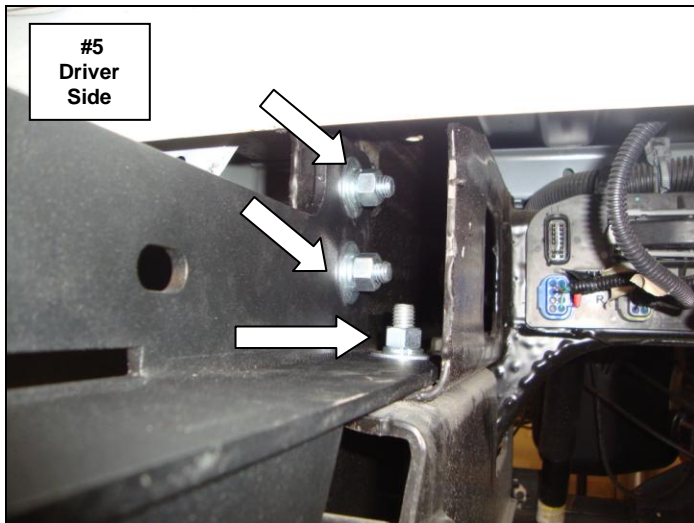
Step-4 Prepare the inside surface of the bumper shell where the bezel plates will be mounted with Isopropyl alcohol. A clean, dry surface is required in order for tape to stick properly.

Step-5 Peel the backing off from the double sided tape to uncover the adhesive. From inside the bumper shell position each bezel, sensor and bezel plate assembly, making sure the sensor bezel is centered in the hole provided in the bumper shell, (Photo 3 & 4).

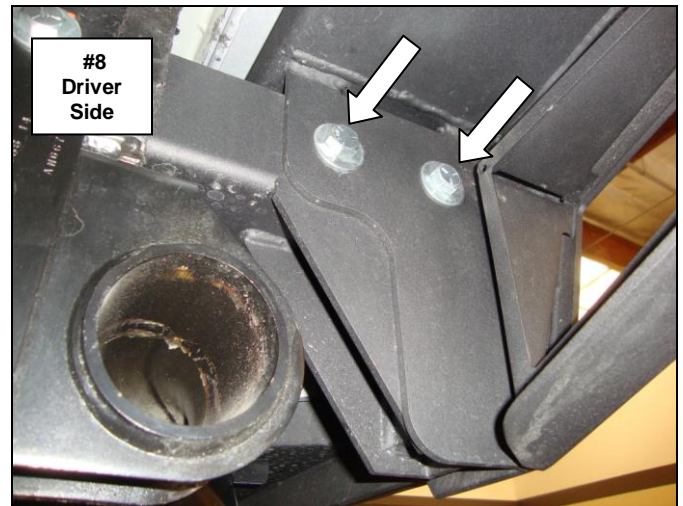
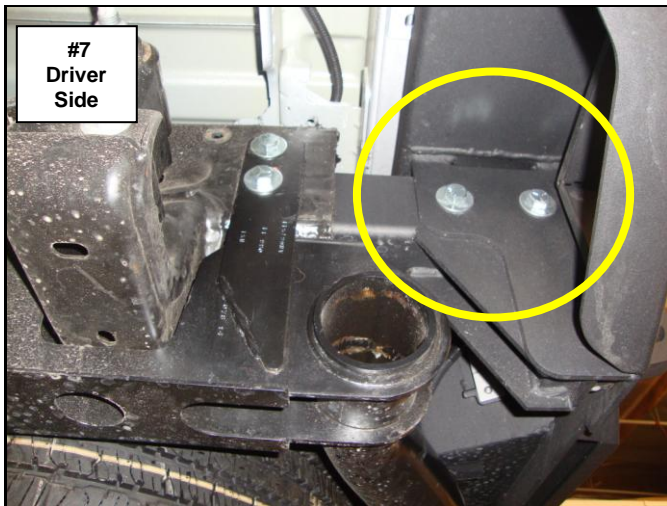
Step-6 Stick the assembly in place and apply firm pressure for about 30 seconds. The tape needs to bond with the mounting surface, and it needs pressure to do this. The bezel mounting plate will seem like it is stuck on, but continue pressing for at least 30 seconds. Note: At room temperature approximately 50% of ultimate bond strength will be achieved after 20 minutes, 90% after 24 hours and 100% after 72 hours.



Step-7 Position the driver side frame bracket inside the frame rail and secure the frame bracket and receiver hitch to the bottom of the frame using (1) ½" x 2" hex bolt and to the side of the frame using (2) ½" x 1 ½" hex bolts, (6) ½" flat washers, (3) ½" lock washers and (3) ½" Hex nuts, (Photo 5 & 6). Tighten the nuts and bolts. Repeat to install the passenger side frame bracket.



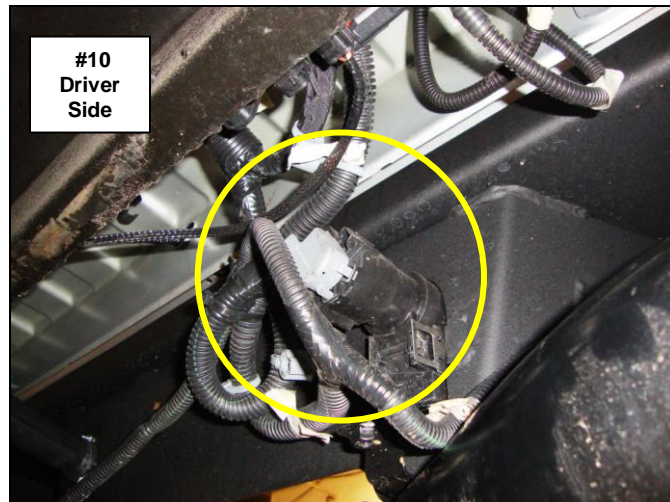
Step-8 With assistance attach the bumper shell brackets to each frame bracket using (2) ½" x 1 ½" hex bolts, (4) ½" flat washers, (2) ½" lock washers and (2) ½" Hex nuts, Align the bumper shell with the vehicle, verify that the tailgate clears when lowered, and tighten all nuts and bolts, (Photo 7 & 8). If necessary loosen the frame / receiver hitch bolts to adjust the bumper replacement.



Step-9 Reconnect the factory bumper wiring harness to the sensors and to the vehicle wiring harness.

Secure (cable tie) the spare tire winch access tube to the frame, and use the supplied rectangular and round plug to fill the unused access tube holes in the rear bumper replacement.

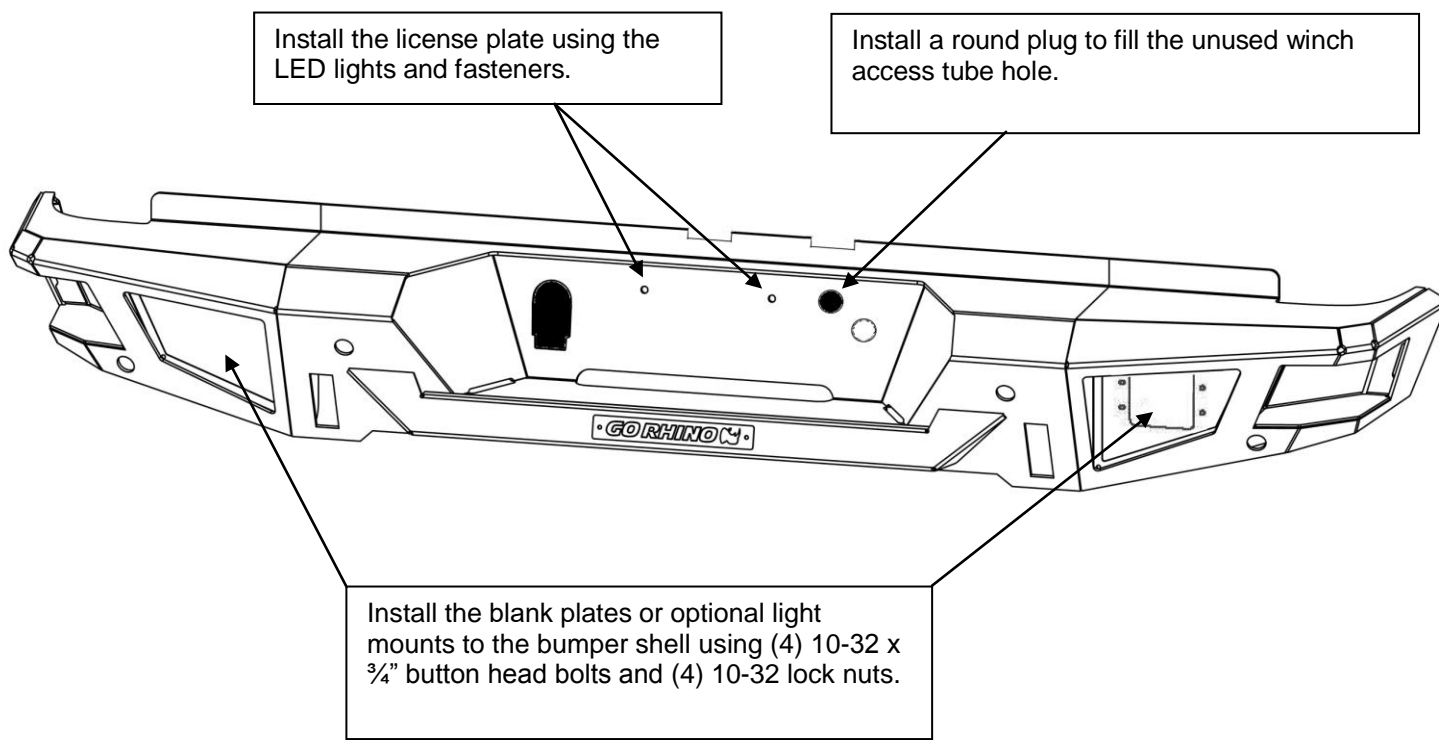
Step-10 Remove the trailer plug from the factory bumper and install it in the bumper shell, and reconnect the wiring harness, (Photo 9 & 10).



Step-11 Install the license plate using the supplied LED lights and fasteners to the bumper shell. Use a circuit tester to find the hot and ground from the factory license plate light wiring, and then splice the wires from the supplied lights.

Step-12 The spare tire winch access cover and lock in the factory bumper will not be reinstalled in the bumper replacement, as the winch will now be accessed through the hole provided in the bumper replacement. Install the supplied rectangular and round plugs to fill the unused winch access tube holes in the bumper replacement.

Step-13 Install the supplied blank plates or optional light mounts to the bumper shell using (4) 10-32 x $\frac{3}{4}$ " button head bolts and (4) 10-32 lock nuts.



Step-14 Remember to check and retighten all factory and supplied nuts and bolts periodically.