

Preparation:

- Disconnect the negative battery terminal. Park the vehicle on level ground and set the emergency brake.
- We recommend reading through the installation instructions in whole before performing the work.
- When button head bolts are being used, install the supplied washer on the nut side. Then, hold the bolt stationary and only turn the nut to tighten. Do not turn the bolt to tighten hardware assembly, unless otherwise noted.
- Estimated Installation Time: **2 Hours for OEM Removal/Bumper Installation**

1 Additional Hour to Wire Lights

*****This installation requires 2 people for best results*****

*****Labor Rates are based on a vehicle with no pre-existing damage. Wiring labor is based on a standard wiring procedure with light switches installed in an easily accessible location. Custom light triggering or switch mounting location will result in a greater labor charge.*****

You will need the following tools:

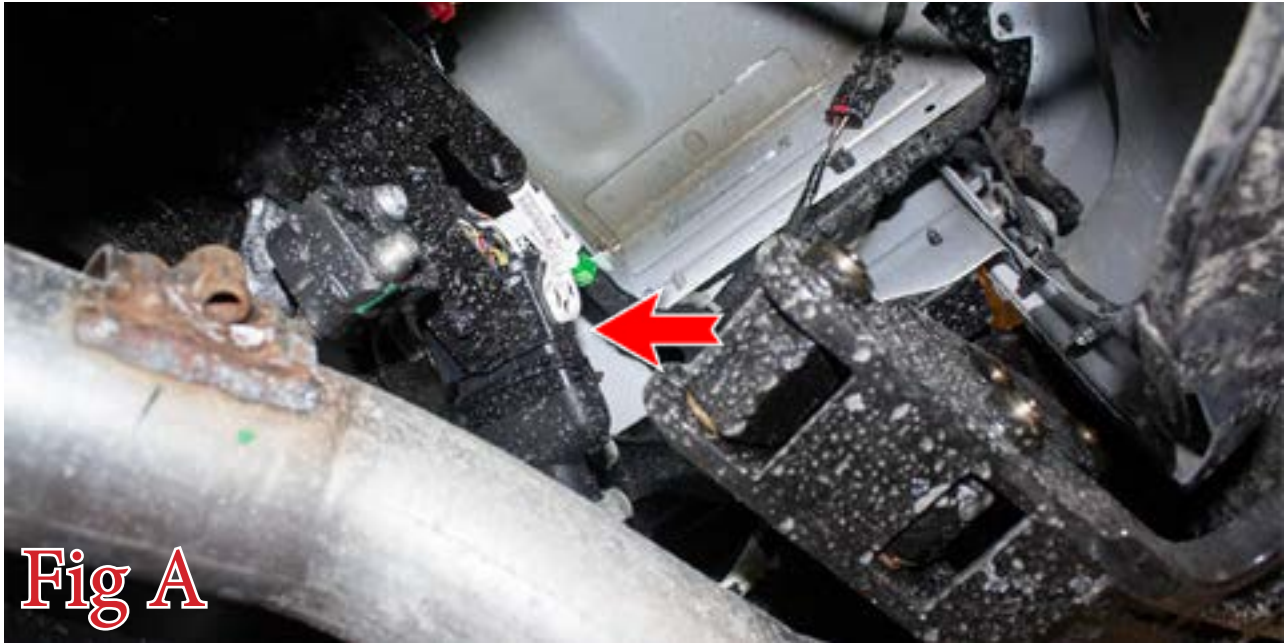
- | | | |
|---------------|------------------------|---------------|
| - Ratchet | - 3/4" Socket & Wrench | - 10mm Socket |
| - 16mm Socket | - Putty Knife | - Epoxy |

Included in Kit:

- | | |
|--|--|
| 4 - Hex Head Bolts (1/2"-13 x 1 1/2") | 8 - Flat Washers (1/2") |
| 4 - Nylon Lock Nuts (1/2"-13) | 6 - Cable ties (8") |
| 1 - Parking Sensor Bezels (Set of 4) | 1 - LP Light Bracket |
| 1 - LP Light Bracket - Mirror | 1 - Rubber Grommet for (3/4") Sensor Plug |

Removal:

1. From underneath the driver's side of the vehicle, unplug the main bumper harness connector. (Fig A)



2. Unplug the connector on the back side of your trailer plug. Then, remove the trailer plug from the OEM bumper by pressing in the tabs on the back side of the plug and pushing it out the front of the bumper. (Fig B)



4. Remove the two plastic clips that sit behind the license plate. (Fig C)



Fig C

3. From underneath the vehicle, use a 16mm Socket to remove the two bumper mounting bolts (per side). Then, remove the OEM bumper from the vehicle. (Fig D)



Fig D

5. Remove the two plastic clips referenced in (Fig E). Then, remove the module from the bumper.



6. Squeeze in the two metal tabs referenced in (Fig F). Then, remove that module from the bumper.



7. Remove the parking sensors from their mounting rings by spreading the two tabs on the back side of the mounting rings. Keep track of what position/orientation these come off the OEM bumper so you can install them on your new bumper in the same position/orientation. (Fig G) **You do not need to remove the parking sensor mounting rings. You will not be reusing them.**



Fig G

Release the parking sensor by spreading these two tabs

8. Using a 10mm Socket, remove the bolt (one per side) that holds the license plate lights into place. Then, remove the license plate lights. **Save these bolts for reuse.** (Fig H)

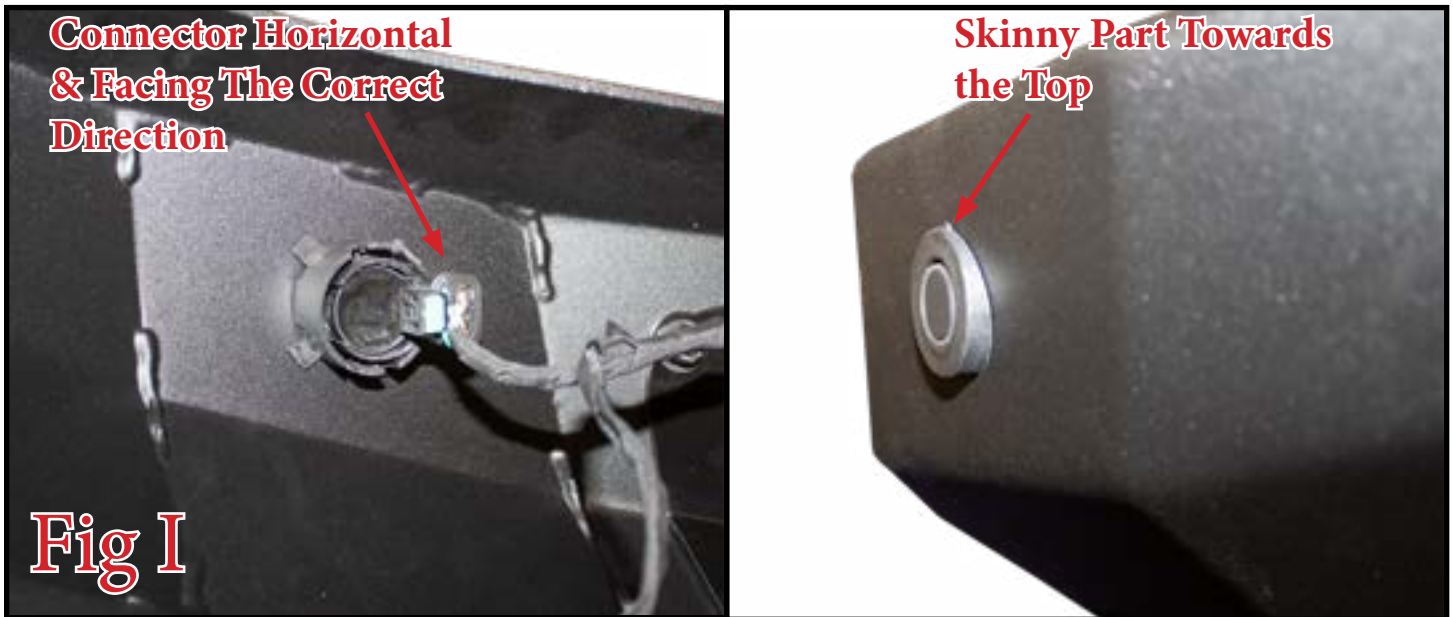


Fig H

Installation:

9. Find the supplied set of four parking sensor bezels. Install these onto your bumper so that the skinnier part of the ring is facing upwards and the sensor connector is horizontal, facing the same direction it was on the OEM bumper. The inner two sensors have the connector facing towards the outside of the bumper, while the outer two sensors have the connector facing towards the center of the bumper. (Fig I)

You will need to first install the outer ring into the bumper from the front side. Then, snap the backer ring on from the back side. Finally, push the sensor into place from the back side.



10. Install the trailer plug into your new bumper by pressing it into its precut hole. If your trailer plug is loose, you can spread the tabs on the back side of the trailer plug outwards to help hold it in place. (Fig J)



11. Install your license plate lights. To do this, find the license plate light brackets. Then, install the license plate lights using the supplied brackets and the bolts that were set aside in Step 8. Install the license plate lights in the same position/orientation as they came off the OEM bumper. **DO NOT OVER TIGHTEN THE MOUNTING BOLTS OR YOU WILL BREAK THE LIGHT HOUSINGS.** Tighten the bolts until the lights aren't loose anymore and stop. (Fig K)



Fig K

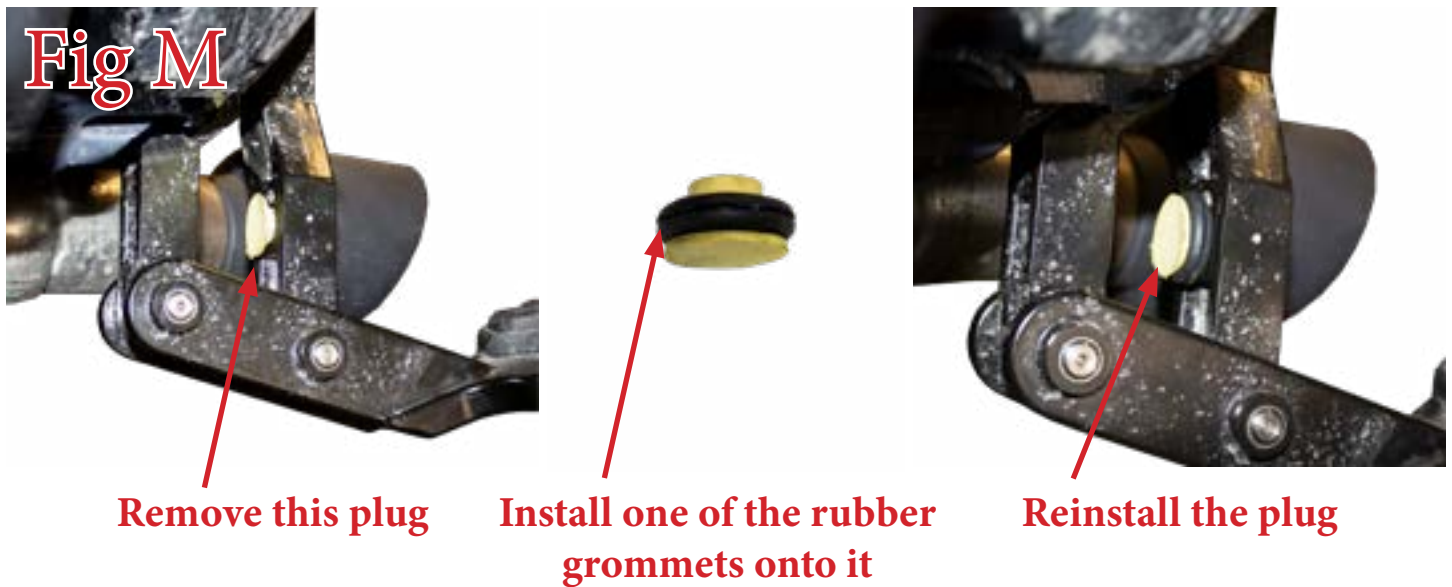
12. Carry the harness over to your new bumper. Plug in the parking sensors and license plate lights. Also make sure the main connector is installed on the driver side of the bumper. (Fig L) As you install the harness, you can zip tie the modules from Steps 5 & 6 to the harness and let them hang.



Fig L

13. If you have cube lights to install on the bumper, do so now. Follow the light manufacturer's guide for mounting/wiring information.

14. If you have a retracting bed step on your TRX, follow this step. Otherwise, skip ahead to the next step. Remove the felt pad that acts as the stop for the retracting step. Then, install one of the supplied rubber grommets and reinstall the pad. You may have to use some RTV or something similar to hold the felt pad in place. (Fig M)



15. Set the bumper in place on the vehicle. Then, loosely install the supplied 1/2" Bolts (2 per side), 1/2" Washers (4 per side), and 1/2" Lock Nuts (2 per side). Leave these bolts loose for now. (Fig N)



Fig N

2021-Current Ram 1500 TRX Pro Bolt-on™
Rear Bumper Installation Instructions

16. Align your bumper so it is centered left to right and straight in relation to the tailgate. Then, tighten the mounting bolts to 70 foot pounds.
17. Plug in the connector from Step 1.
18. Stand back and enjoy your new ADD Pro Bolt-on™ Rear Bumper.
19. Check and re-tighten, if needed, all mounting bolts after 100 miles and periodically thereafter.

