



PART NUMBER: **F094RKRC**

PRODUCT: **Rock Rail**

APPLICATION: **09-14 F-150**

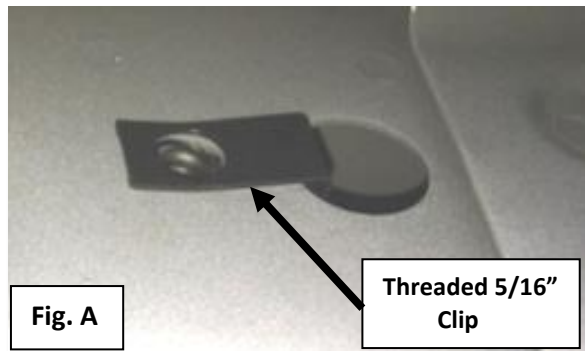
Bolt Kit	(Included in the box):
•	12) 3/8 X 1 1/2" carriage bolts
•	12) 3/8" washers
•	12) 3/8" nuts
•	12) 5/16 clips
•	12) 5/16 flat washers
•	12) 5/16 hex bolts
Tools Needed:	
•	9/16" gear wrench socket and ratchet



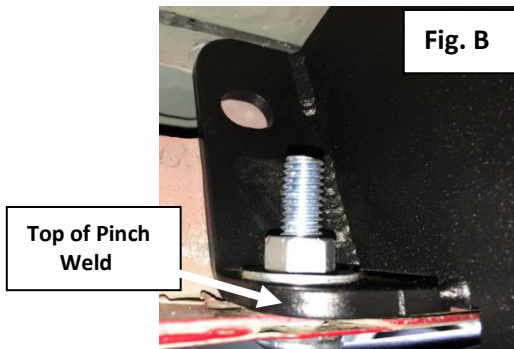
(Picture shown with detachable steps sold separately prt# JPTS32)

Step 1 Remove any factory equipped running boards and fasteners and discard.

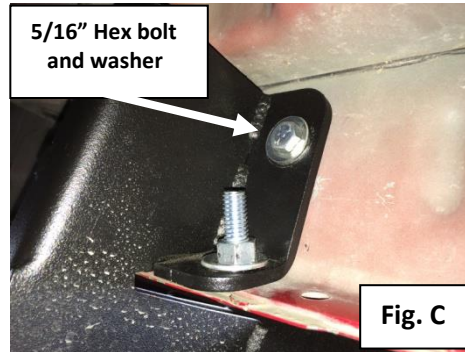
Step 2. Starting with the driver side, install the four 5/16" clips into the upper factory mounting locations. **(Fig.A) Note: The center mounting location will not use the upper mounts.**



Step 3 Hold the Hoop Step to the underside of the vehicle. The oval holes in the Hoop Step bracket will align with the factory holes on the top pinch roll of the truck. Using the 3/8" x 1 1/2" hardware provided, insert the carriage bolt from the outside and attach the flat washer and nut and finger tighten. **(Fig.B)**



Step 4. Next, insert the two 5/16" hex head bolts and washers in the front and rear brackets. Do not fully tighten at this time. **(Fig.C)**



Step 5. Starting with the first bracket, fully tighten the bottom carriage bolts and continue with the center and rear bracket.

Step 6. Once the bottom bolts are secure, fully tighten the top 5/16" button heads in the front and rear brackets.

Step 7. Repeat steps 1-6 with passenger side step. Your install is now complete.