



Installation Instructions

Truck Grumper

Product Number: GR4500

Application: 2018 F150

! IMPORTANT SAFETY GUIDE

- Your safety and the safety of others is very important.
- In order to help you make informed decisions about safety, we have provided the following warnings, safety precautions, installation instructions, and other important information to alert you to potential hazards that could hurt you or others.
- Please do a job safety analysis before each task to identify potential hazards for your situation and remove/protect against them.
- Use own good judgment and take your time.
- Check packaged materials immediately upon arrival to ensure that all listed parts are included and undamaged.

Read and understand all warnings, safety precautions, and instructions before installing this product.

SENSORS FIELD OF VIEW WILL BE ALTERED WITH USE OF THE REPLACEMENT BUMPER.

WARNINGS

- **FAILURE TO OBSERVE THE FOLLOWING WARNINGS AND INSTRUCTIONS PROVIDED IN THIS MANUAL COULD LEAD TO SEVERE INJURY AND/OR DEATH.**
- **FOR PROFESSIONAL INSTALLATION ONLY. CARELESS INSTALLATION AND/OR OPERATION CAN RESULT IN SERIOUS INJURY, DEATH, AND/OR EQUIPMENT DAMAGE. ALL LIABILITY FOR INSTALLATION AND USE RESTS WITH THE USER OR CONSUMER.**
- **FAB FOURS, INC. ONLY APPROVES INSTALLING THIS PRODUCT ACCORDING TO THESE WRITTEN INSTRUCTIONS WITH THE HARDWARE PROVIDED. FAILURE TO INSTALL ACCORDING TO THESE INSTRUCTIONS WILL INVALIDATE THE WARRANTY. THIS INCLUDES, BUT IS NOT LIMITED TO, USING ALTERNATIVE INSTALLATION METHODS, HARDWARE, OR MATERIALS.**
- **THIS PRODUCT IS FOR OFFROAD USE ONLY.**



GR4500



Installation Instructions

Truck Grumper

Product Number: GR4500

Application: 2018 F150

SAFETY PRECAUTIONS

- Always remove jewelry and wear eye protection.
- Always use extreme caution when jacking up a vehicle for work. Set emergency brake and use tire blocks. Locate and use the vehicle manufacturers designated lifting points. Use jack stands.
- Always use appropriate and adequate care in lifting components into place.
- Always ensure components will remain secure during installation and operation.
- Always wear safety glasses when installing this kit. A drilling operation will cause flying metal chips. Flying chips can cause serious eye injury.
- Always use extreme caution when drilling a vehicle. Always disconnect power before welding. Thoroughly inspect the area to be drilled (on both sides of material when possible) prior to drilling, and relocate any objects that may be damaged.
- Always use extreme caution when welding a vehicle. Thoroughly inspect the area to be welded (on both sides of material when possible) prior to welding, and relocate any objects that may be a fire hazard. When welding in a cab, make sure the interior surfaces are covered (*e.g.*, welding blanket) and a fire extinguisher is at hand.
- Always use extreme caution when cutting and trimming during fitting.
- Always tighten all nuts and bolts securely per installation instructions.
- Always route electrical cables carefully. Avoid moving parts, components that become hot, and rough or sharp edges.
- Always insulate and protect all exposed wiring and electrical terminals.
- Perform regular inspections and maintenance on mounts and hardware.
- Tire may rub at max turn or articulation.



GR4500



Installation Instructions

Truck Grumper

Product Number: GR4500

Application: 2018 F150

I. Overview

Congratulations on your purchase of the industries' best and most stylish Ford F150 Winch Grumper! This bumper has been **engineered** for strength while keeping the weight down. It can accept the Warn Zeon series winch... and look cool doing it.

This product has also been **engineered** to allow alignment in three directions so you will end up with a very professional fit.

Your bumper was designed in 3-D, fabricated, and powder coated... all in the U.S.A.

Enjoy the fit and finish of a quality Ford F150 Winch Grumper from Fab Fours Inc!



GR4500



Installation Instructions

Truck Grumper

Product Number: GR4500

Application: 2018 F150

II. Vehicle Preparation

1. Start by opening the hood to remove the 11x push-in rivets and the 5x push-in rivets from the top valence.



GR4500



Installation Instructions

Truck Grumper

Product Number: GR4500

Application: 2018 F150

2. At this point remove the top valence from the vehicle and replace two of the push-in rivets in the driver side intake.



3. Remove the 4x 10mm bolts from the top of the grill.



GR4500



Installation Instructions

Truck Grumper

Product Number: GR4500

Application: 2018 F150

4. Next begin to remove the wheel trim by removing the 2x 7mm bolts in both the driver and passenger side front wheel wells.



5. Then remove the 4x push-in rivets in both the driver and passenger front wheel wells.



GR4500



Installation Instructions

Truck Grumper

Product Number: GR4500

Application: 2018 F150

6. Carefully remove the wheel trim using a body pry tool.



GR4500



Installation Instructions

Truck Grumper

Product Number: GR4500

Application: 2018 F150

7. After the trim has been removed, the lower valence can be removed from the vehicle by carefully disconnecting the plastic clips.



8. After the lower valence is removed the 2x 10mm bolts (both DS and PS) located under the headlights can be accessed and removed.



GR4500



Installation Instructions

Truck Grumper

Product Number: GR4500

Application: 2018 F150

9. The grill and upper louver system can now be removed by carefully pulling it away from the louvers. Make sure to unplug the harness from the grill assembly.



10. Remove the two plastic bumper covers located on both the DS and PS of the front bumper.



GR4500



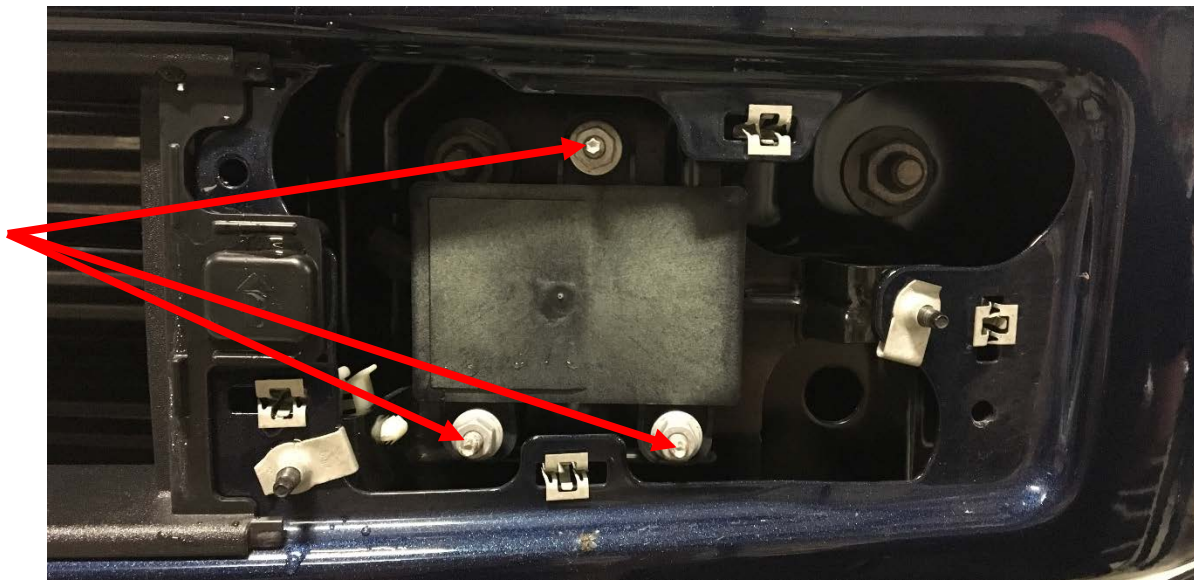
Installation Instructions

Truck Grumper

Product Number: GR4500

Application: 2018 F150

11. Once the plastic covers are removed the bumper mounting bolts will be accessible. To access the DS bolts the adaptive cruise control will have to be removed. Remove the cruise control by using either a E6 or 4mm socket on the tip of the bolt.



GR4500



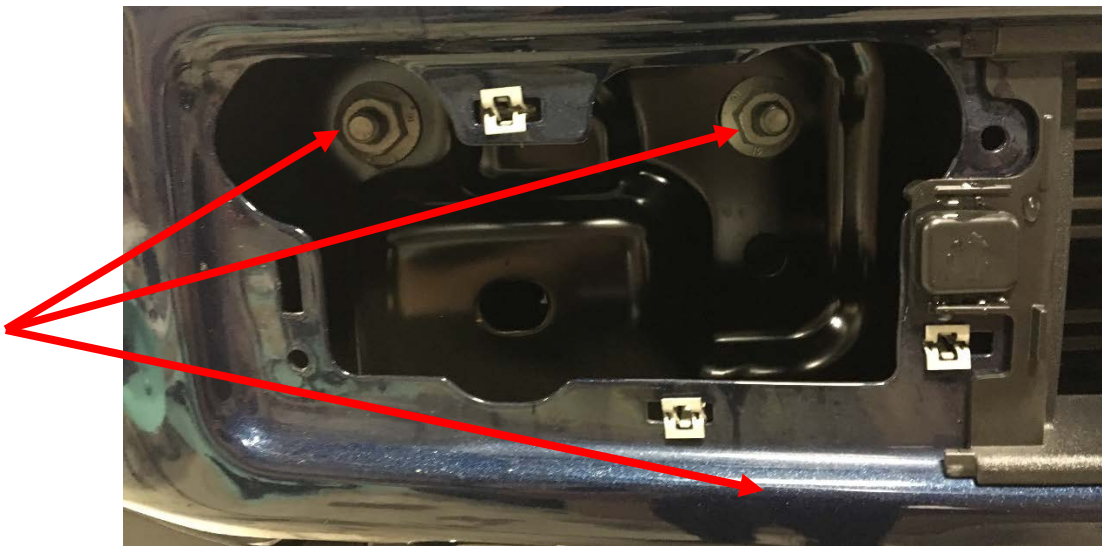
Installation Instructions

Truck Grumper

Product Number: GR4500

Application: 2018 F150

12. Now remove the 2x mounting nuts/bolt plate and 1x nut from both the DS and PS and remove the bumper from the vehicle. Disconnect the wire harness from the bumper before removing it. (The nut can be accessed from behind the bumper)



13. Lastly remove the tow rings and lower louver system from the vehicle to complete the disassembly. Remove the lower louver from the mounts by removing the 4x 10mm bolts and unplugging the harness. Remove the tow rings using a 16mm socket for the 2x nuts.
14. Place all OEM hardware to the side for later use.



GR4500



Installation Instructions

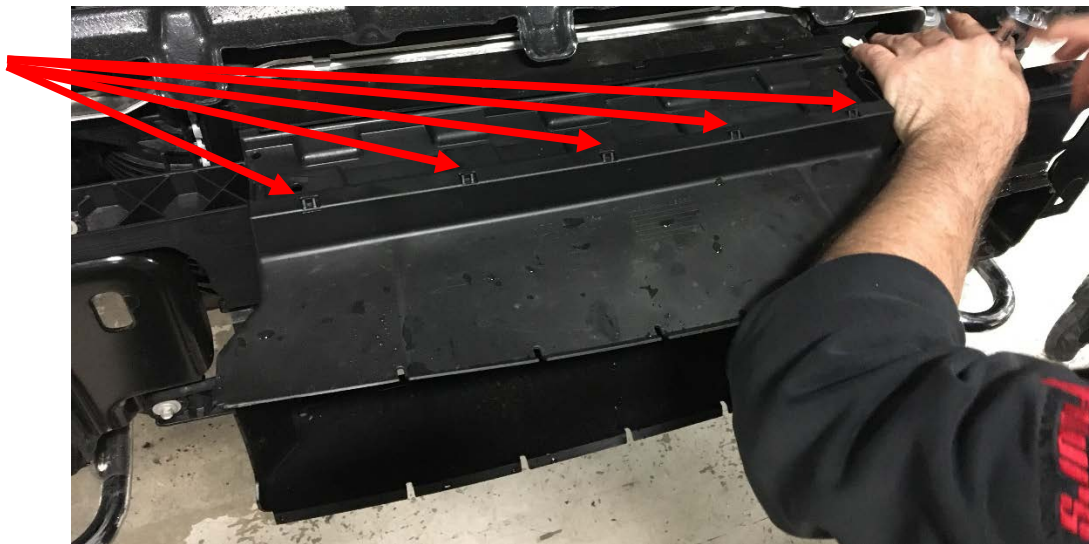
Truck Grumper

Product Number: GR4500

Application: 2018 F150

III. PRE-INSTALLATION

1. Start by removing the upper louver system from the grill and set it aside to be trimmed.
2. If your F150 has a front camera removed it from the grill at this point and set it aside for later use in the Grumper.
3. Take the lower louver system and remove the front plastic trim by unclipping the plastic fasteners.



GR4500



Installation Instructions

Truck Grumper

Product Number: GR4500

Application: 2018 F150

4. Once the trim is removed, use a silver Sharpie to draw a line flush with the mounting surface for cutting. Cut along the line to trim off access plastic.



GR4500



Installation Instructions

Truck Grumper

Product Number: GR4500

Application: 2018 F150

5. Take the upper louver system and draw a line along the lower mounting face. Cut along the line to remove the extra plastic. (This step is only necessary if installing a winch)



GR4500



Installation Instructions

Truck Grumper

Product Number: GR4500

Application: 2018 F150

6. place the upper louver system back on the truck using OEM hardware.
7. Remove the plastic trim from around the headlight and wheel well by removing the 3x 10mm bolts.



8. Remove the lower plastic headlight support for trimming by removing the 8mm bolt and 3x torques bolts.



GR4500



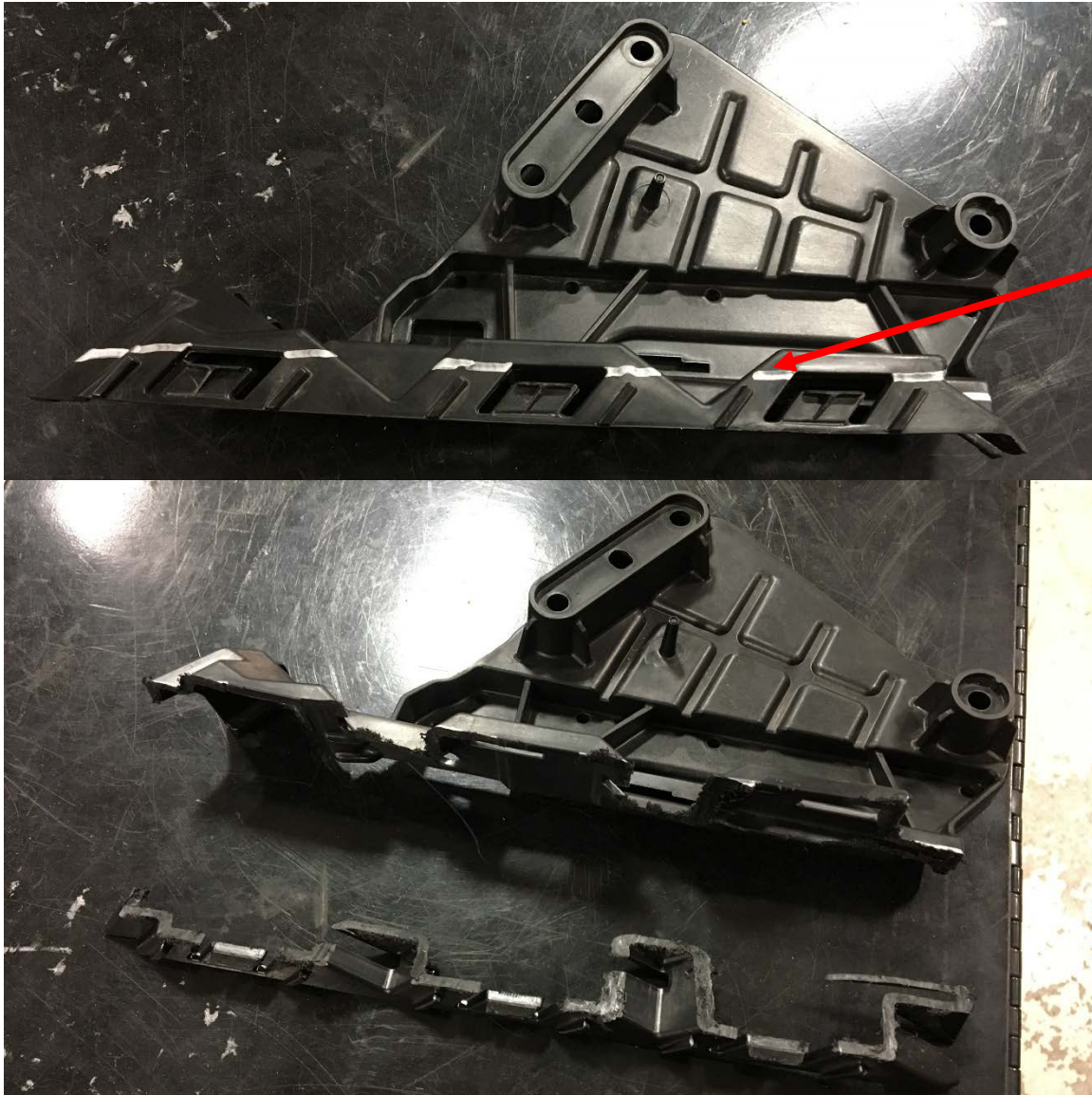
Installation Instructions

Truck Grumper

Product Number: GR4500

Application: 2018 F150

9. Mark the headlight support as shown below and trim.



10. Re-install the headlight support using OEM hardware.



GR4500



Installation Instructions

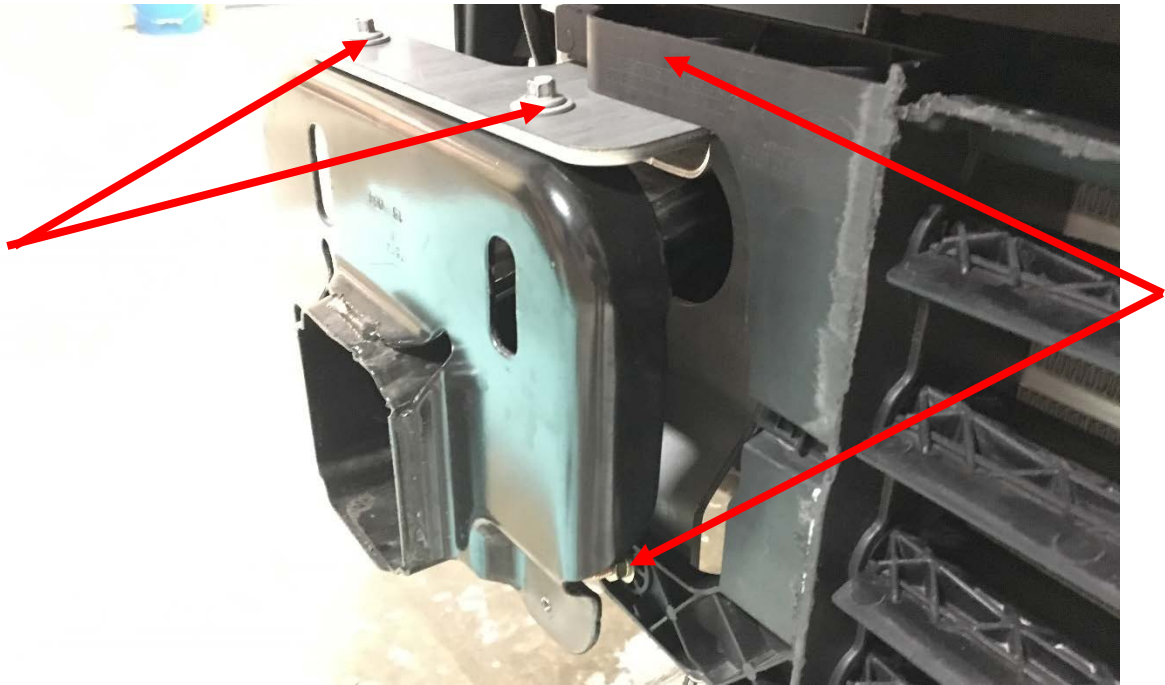
Truck Grumper

Product Number: GR4500

Application: 2018 F150

IV. GRUMPER INSTALL

1. Take the lower louver brackets and attach them to the louver using the 1/4" bolts, washers and nuts. Then use the OEM hardware to attach the brackets to the frame as shown below. Make sure to plug the louver system in using the harness from the bumper.



GR4500



Installation Instructions

Truck Grumper

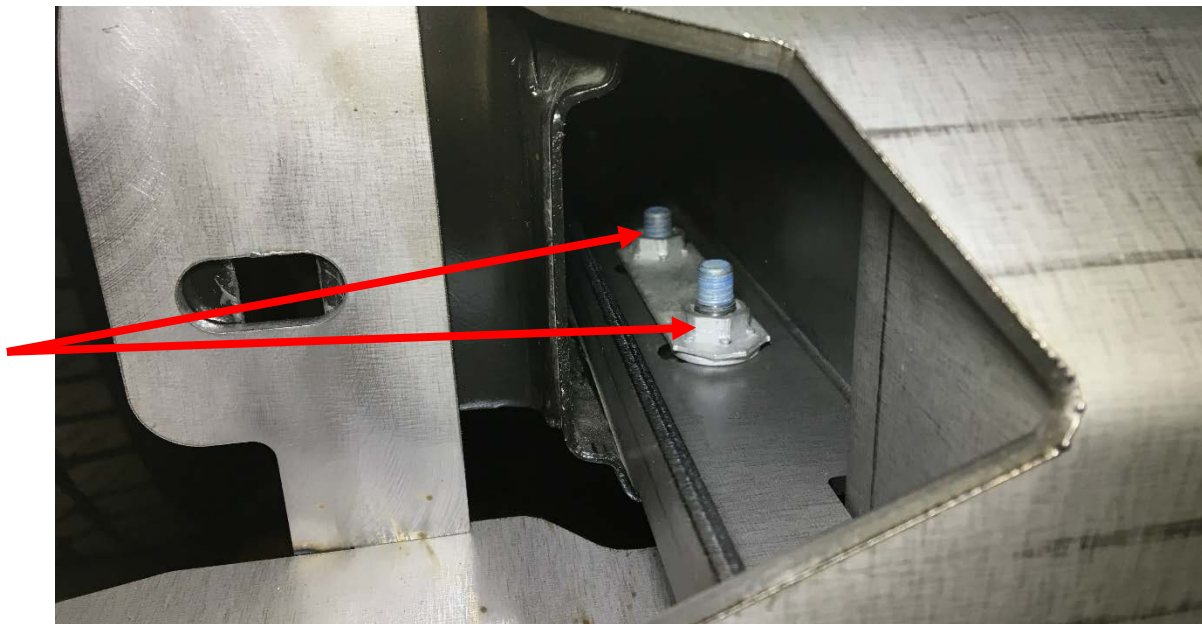
Product Number: GR4500

Application: 2018 F150

2. **OPTIONAL:** If your F150 has a front camera, install it now in the winch mount as shown below using the small square and rectangular brackets shown below. Use the 3/8" bolts and washers to secure it in place (Do not over tighten).



3. Take the OEM mounting nut plates and place them on the winch mounting brackets. Place the winch mount brackets in the frame and use the OEM bolts to tighten it down.



GR4500



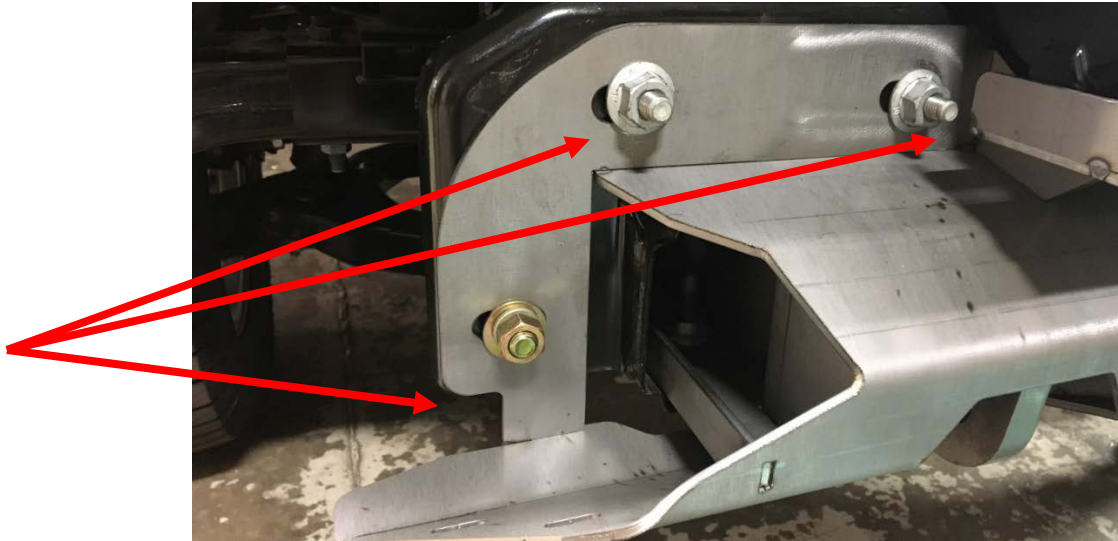
Installation Instructions

Truck Grumper

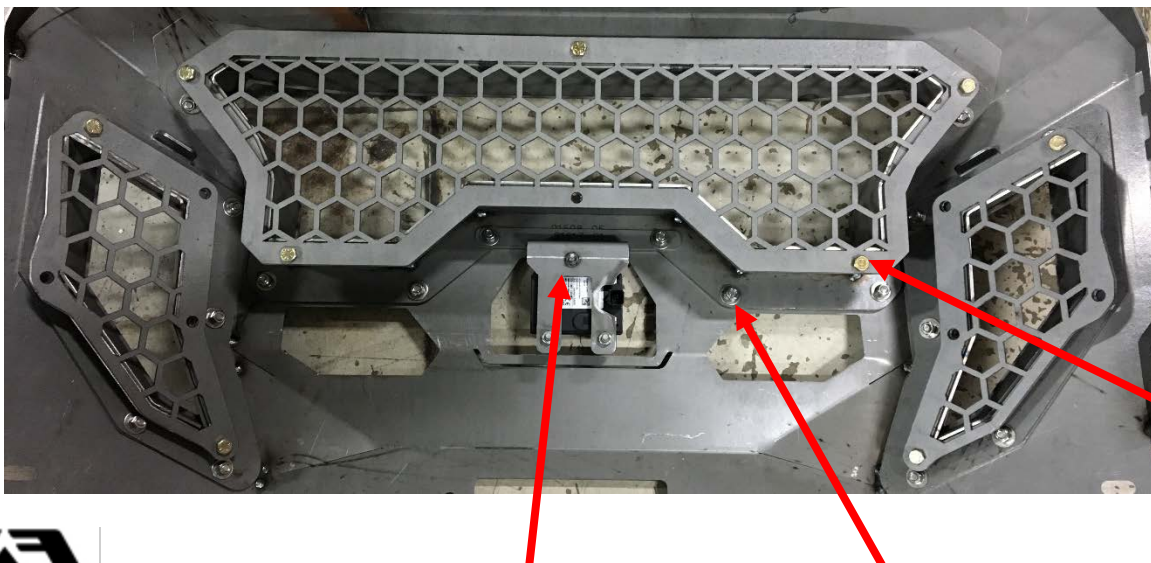
Product Number: GR4500

Application: 2018 F150

4. Use the OEM bolt plate and nuts along with the 7/16" bolts and nuts to attach the mounting face.



5. Take the center section and insert the grill mesh boxes and mesh using the 3/8" button head bolts and 3/8" socket head bolts respectively. Make sure to use Loctite to insure the bolts do not bind or come loose. If your F150 has adaptive cruise control, install it now.



GR4500



Installation Instructions

Truck Grumper

Product Number: GR4500

Application: 2018 F150

6. Once the center mesh boxes are bolted in place, take the center and bolt it onto the winch mount using the 1/2" button head bolts, nuts and washers. Then take the OEM 10mm bolts and attach them to the upper center brackets.



GR4500



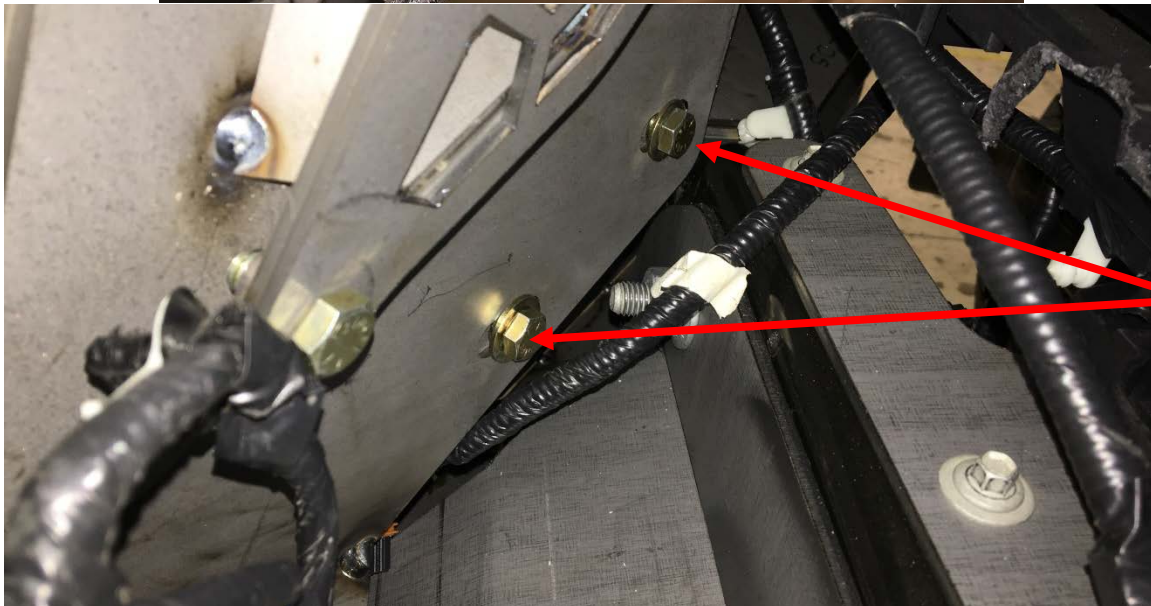
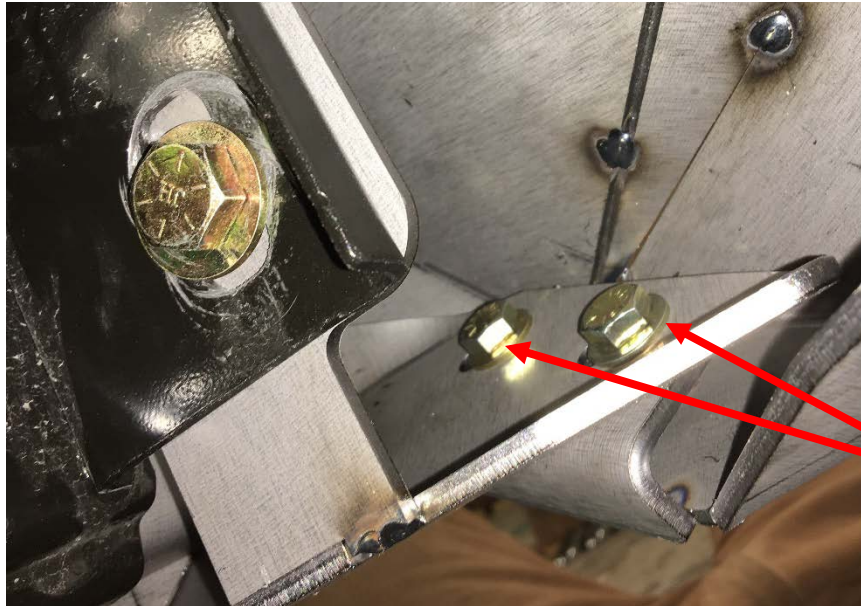
Installation Instructions

Truck Grumper

Product Number: GR4500

Application: 2018 F150

7. Next take the two wings and use the 3/8" bolts to attach them to the center.



GR4500



Installation Instructions

Truck Grumper

Product Number: GR4500

Application: 2018 F150



****Location of wing bolts shown here****

8. Make sure all fitment is in the right place and tighten all mounting bolts.



GR4500