



INSTALLATION MANUAL
JEEP JL ROCK SLIDERS
PRODUCT NUMBER: G1750
APPLICATION: 2018 JEEP JL



IMPORTANT SAFETY GUIDE | Your safety and the safety of others is very important.

In order to help you make informed decisions about safety, we have provided the following warnings, safety precautions, installation instructions, and other important information to alert you to potential hazards that could hurt you or others.

Please do a job safety analysis before each task to identify potential hazards for your situation and remove/protect against them. Use own good judgment and take your time.

Check packaged materials immediately upon arrival to ensure that all listed parts are included and undamaged.

Read and understand all warnings, safety precautions, and instructions before installing this product.

SENSORS FIELD OF VIEW MAY BE ALTERED WITH USE OF THE REPLACEMENT BUMPER.

WARNINGS

- Failure to observe the following warnings and instructions provided in this manual could lead to severe injury and/or death.
- For professional installation only. Careless installation and/or operation can result in serious injury, death, and/or equipment damage. All liability for installation and use rests with the user or consumer.
- Fab Fours, Inc. only approves installing this product according to these written instructions with the hardware provided. Failure to install according to these instructions will invalidate the warranty. This includes, but is not limited to, using alternative installation methods, hardware, or materials.
- This product is for off road use only.

SAFETY PRECAUTIONS

- Always remove jewelry and wear eye protection.
- Always use extreme caution when jacking up a vehicle for work. Set emergency brake and use tire blocks. Locate and use the vehicle manufacturers designated lifting points. Use jack stands.
- Always use appropriate and adequate care in lifting components into place.
- Always ensure components will remain secure during installation and operation.
- Always wear safety glasses when installing this kit. A drilling operation will cause flying metal chips. Flying chips can cause serious eye injury.
- Always use extreme caution when drilling a vehicle. Always disconnect power before welding. Thoroughly inspect the area to be drilled (on both sides of material when possible) prior to drilling, and relocate any objects that may be damaged.
- Always use extreme caution when welding a vehicle. Thoroughly inspect the area to be welded (on both sides of material when possible) prior to welding, and relocate any objects that may be a fire hazard. When welding in a cab, make sure the interior surfaces are covered (e.g., welding blanket) and a fire extinguisher is at hand.
- Always use extreme caution when cutting and trimming during fitting.
- Always tighten all nuts and bolts securely per installation instructions.
- Always route electrical cables carefully. Avoid moving parts, components that become hot, and rough or sharp edges.
- Always insulate and protect all exposed wiring and electrical terminals.
- Perform regular inspections and maintenance on mounts and hardware.

TABLE OF CONTENTS

- 2 SAFETY / DISCLAIMER
- 3 TABLE OF CONTENTS
- 4 A MESSAGE FROM THE OWNER
- 5 GETTING STARTED
- 6 PROVIDED MATERIAL
- 7 DISASSEMBLY
- 9 INSTALLATION
- 10 CONTACT

A MESSAGE FROM THE OWNER



Fab Fours' was born out of a passion for customizing vehicles and a love of the outdoors. Our engineering team uses the latest 3D design software to turn new product ideas into reality. In our factory, designs come to life with the combination of cutting edge technology for metal cutting and forming and an American workforce that puts its' heart and pride into every product.

From design and manufacturing, to quality and delivery, Fab Fours' mission is to be the market leader for steel truck and jeep accessories. We make sure a quality product is delivered on time, more than expected, better than expected to our customers.

Enjoy your new Fab Fours product. Welcome to the family!

Ereg Higgs

FOUNDER, FAB FOURS

GETTING STARTED

Before you begin the installation process of your new Fab Fours product, we suggest laying out all materials and parts on a pad or protective surface.

Failure to fully account for all components before beginning installation may leave vehicle immobile until part is acquired. Refer to the next pages as an inventory check.



PROVIDED MATERIALS



21942



21943

HARDWARE KIT | 50191

FAB FOURS IDENTIFICATION	COMPONENT DESCRIPTION	QTY
50191-HW	5/16"-18 X 1.25", Yellow Zinc Hex Cap Bolt, Grade 8	10
50191-HW	5/16"-18, Yellow Zinc Hex Nut, Grade 8	10
50191-HW	5/16", Yellow Zinc Flat Washer, Grade 8	20
50191-HW	5/16", Yellow Zinc Lock Washer, Grade 8	10
50191-HW	Plastic Plug for 2.00" Tube	4

TOOLS REQUIRED

- 10mm socket wrench
- 13mm socket wrench
- (2) 1/2" socket wrenches
- Torque wrench

ASSISTANCE

We recommend two people perform the installation as items are heavy and may need to be held in place while installing.

ORGANIZATION

Disassemble the vehicle where you can catalog and store everything. We suggest labeling and bagging all the OEM bolts when removing from the vehicle. Failure to keep track of parts could lead to an inability to properly reinstall components.

DISASSEMBLY

NOTE: Save all OEM parts until installation is complete!

1. Using a 13mm and 10mm socket wrench, remove the three (3) OEM floor pan bolts and the six (6) pinch seam bolts from the underside of the driver side OEM sliders. (Figure 1)

2. Remove the same bolts from the passenger side OEM slider as detailed in step 1. (Figure 1)

3. Using both a 13mm and 10mm socket wrench, remove the OEM rock sliders from the vehicle if equipped.

4. Using an 18mm socket wrench, remove the two (2) body mount bolts on the driver side and the two (2) body mount bolts on the passenger side. (Figure 2)

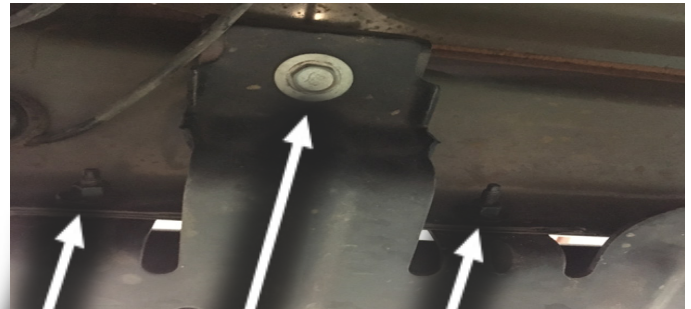


Figure 1



Figure 2

5. With assistance, hold the driver side slider (21942) up to the pinch weld seam and loosely install the two (2) OEM body mount bolts and two (2) floor pan bolts. (Figure 3-4)



Figure 3

6. Loosely install in five (5) places along the pinch weld seam, one (1) 5/16" yellow zinc hex bolt, two (2) 5/16" yellow zinc flat washers, one (1) yellow zinc lock washer and one (1) yellow zinc hex nut. (50191-HW) (Figure 5)

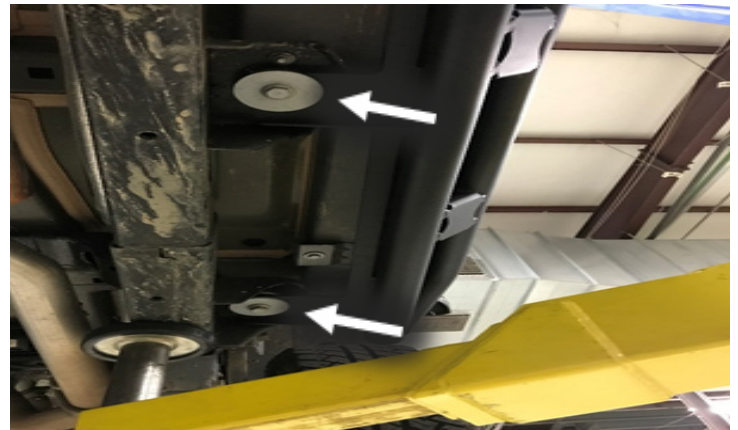


Figure 4

7. Using both a 18mm and 13mm socket wrench, further snug up the four (4) Oem bolts. (Figure 3-4)

8. Using a 10mm wrench, fully reinstall the Oem front fender bolt. (Figure 5)

9. Using two (2) 1/2" socket wrenches, fully tighten down the five (5) sets of 5/16"-18 x 1.25" bolts stacks along the pinch weld seam. (Figure 5)



Figure 5

INSTALLATION

10. Using a 13mm socket wrench and 18mm socket wrench, fully tighten down the two (2) OEM floor pan bolts that were removed in step 1 and the two (2) OEM body mount bolts that were removed in step 4. (Figure 6 and 7)



Figure 6

11. With assistance, hold the passenger side slider (21943) up to the passenger side pinch weld seam and perform steps (5-8)

12. Torque the four (4) body mount bolts to 80 ft-lbs.

8. Fully tighten all mounting hardware between each assembly and the truck.

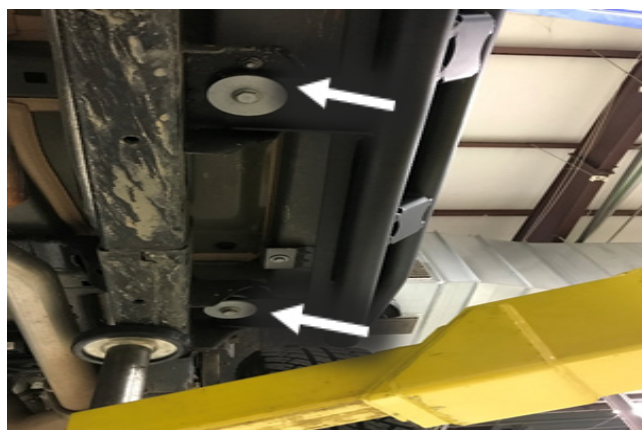


Figure 7