



# FORCE II™

## 409S Stainless Steel

Installation Instructions for:

### SYSTEM #817666

2014-2019 GM SILVERADO/SIERRA 1500 · (NON HD)

FITS: 4.3L & 5.3L ENGINES ONLY

CREW CAB 4WD & DOUBLE CAB 2WD/4WD

08/08/18

#### Removal:

1) Raise the vehicle up on a hoist or rack to working height. If you do not have access to a hoist or rack raise the vehicle and support securely with jack stands.



2) Support the muffler with a stand. Using a hacksaw or sawsall, cut the stock tailpipe off just behind the muffler. Separate the wire hangers on the tailpipe from the rubber mounts on the vehicle and remove the tailpipe from the vehicle. This step is not mandatory but makes removal easier.



3) Using a 15mm wrench, loosen the bolt on the clamped ball connection behind the catalytic converter. Separate the wire hangers from the rubber mounts on the vehicle and lower the inlet pipe and muffler from the vehicle. A lubricant will make removal much easier. You will need to remove the ball clamp from the stock system; it will be reused with the Flowmaster system.

#### Installation:



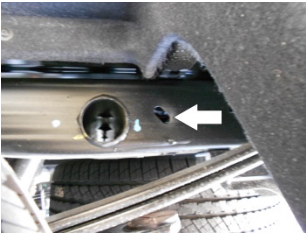
1) Place inlet pipe assembly **#26401S** into position onto the ball connection behind the catalytic converter. Reinstall the clamp onto the ball connection and tighten enough to hold, but still allow for a small amount of adjustment. Connect the hanger on the pipe to the rubber mount on the vehicle.



2) If installing the system on a Crew Cab truck with a 6.5' bed, place extension pipe **#TB700S** onto the back of the **#26401S** inlet pipe, place a provided clamp onto the slip-fit and tighten enough to hold in position. This extension pipe will not be used on Double Cab or Crew Cab-5.5' bed models.



3) Place a supplied 3" clamp over the inlet of the muffler, then slide the inlet of muffler onto the back of the inlet pipe. Use a stand to support the muffler. Tighten the clamp just enough to hold in position.



4) Slide rubber hanger **#HA168** onto the end of **226HA**, then using the supplied bolts, washers, nuts and backing plates **#HA566**, mount the assembly to the frame on the left side of the vehicle using the angled oblong hole on the frame rail. *Note: the backing plates #HA566 go on both sides of the frame between the hanger, washers & bolts to cover the oblong holes so that the frame hangers won't bend into the oblong holes.*



5) Place two of the supplied 2-1/2" clamps over the right and left outlets of the muffler. Place right tailpipe **#86095S** into position over the rear axle, and slide into the right muffler outlet. Connect the two hangers on the pipe to the rubber mounts on the vehicle. Pipe should be approximately 3/4" away from the shock when adjusted.



6) Place left front tailpipe section **#86094S** into position over the rear axle and slide into the left muffler outlet. Place a supplied 2-1/2" clamp onto the back of the pipe. Place left rear tailpipe section **#86096S** onto the front section, and connect the hanger welded to the rear of the pipe into the rubber hanger installed in step 3 above. Pipe should be centered between the shock and the spare tire when adjusted. Tighten the clamps just enough to hold in position.



7) Slide the side exit pipes **#86097S** or the rear exit pipes **#86098S** onto the ends of both over axle pipes and place a supplied 2-1/2" clamp onto these slip-fit connections. Tighten just enough to hold in position. Place the two stainless tips **#ST461** onto the exit pipes and tighten them enough to hold position. Rotate the exit pipes and tips to the desired distance from the body or bumper, so that the angle cut on the tips are in the desired location.

8) Adjust the position of all pipes and muffler to provide a satisfactory fit. A minimum 3/4" clearance around all parts of the system must be maintained; while also keeping suspension travel and vibration in mind.

9) Tighten all clamped connections down securely. Place the supplied 1/2" hanger keepers onto the end of the inlet pipe and tailpipe hangers. Slide the 7/16" hanger keeper onto the left rear frame hanger up to the rubber mounts, to firmly hold the system in place.

10) To prevent the rear axle breather tube from contacting the left side tailpipe, and possibly being damaged, use the enclosed zip tie to fasten the breather tube to the brake line bracket located on the rear end. Be sure to allow hose enough slack for the suspension to fully compress and extend.

11) For a more secure installation, we highly recommend welding all slip-fit connections.

**PACKING LIST**

<u>Qty</u>	<u>Description</u>	<u>Part #</u>
1	Inlet Pipe	26401S
1	6.5' Bed Extension	TB700S
1	Muffler	8530562-Z
1	Tailpipe, Right	86095S
1	Tailpipe, Left Front	86094S
1	Tailpipe, Left Rear	86096S
2	Side Exit pipes R/L	86097S
2	Rear Exit Pipes R/L	86098S
2	Stainless Tips	ST461
1	Parts Kit	PK742
5	2-1/2" Clamp	MC250BS
2	3" Clamp	MC300BS
1	Frame Hanger, Left	226HA
2	Backing Plate	HA566
1	Rubber Hanger	HA168
1	3/8" Nuts	HW103
1	3/8" X 1-1/4" Bolts	HW209
1	3/8" Flat Washers	HW303
1	3/8" Lock Washers	HW309
1	7/16" Hanger Keepers	HW502
5	1/2" Hanger Keepers	HW503
1	15" Zip Tie	HW505



# FORCE II

409S, Stainless Steel

Installation diagram for:  
**SYSTEM #817666**  
2014-2019 GM SILVERADO/SIERRA 1500 · (NON HD)  
FITS: 4.3L & 5.3L ENGINES ONLY  
CREW CAB 4WD & DOUBLE CAB 2WD/4WD

