

PART NUMBER: PRJ0763-TX
 PRODUCT: Aluminum Hoop step
 APPLICATION: 07-18 4 Door Jeep Wrangler

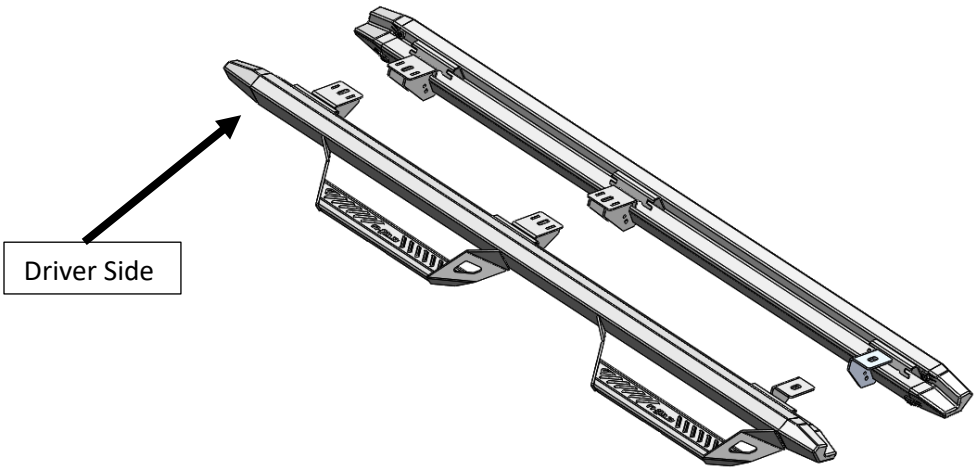
PREDATOR PRO



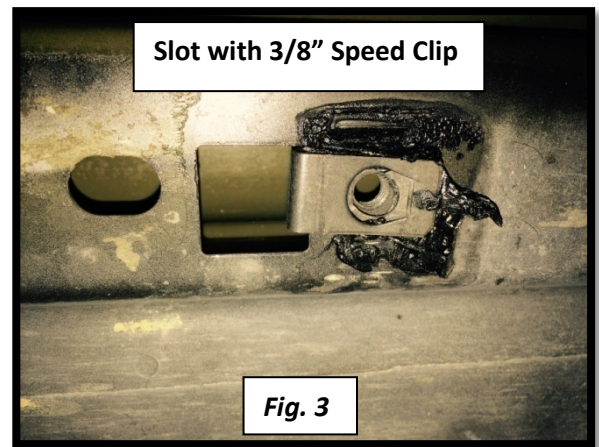
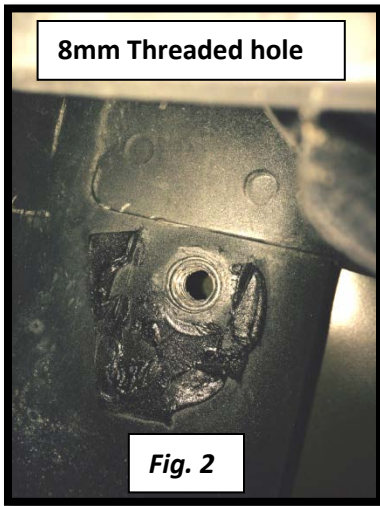
HARDWARE DESCRIPTION	QTY.
KIT# HWKT-00006X	1
3/8 CLIP SHORT	6
3/8-16 X 1 1/4 C/S GR 5 ZNC	6
3/8 USS FLAT WASHER ZNC	6
M8 F/W DIN 433 ZNC	12
M8-1.25X35 HEX TAP BOLT 8.8 ZINC	6
1/4" -20 x 3/4 hex bolt zinc	12
1/4" - 20 snap nut zinc	12

CAREFULLY READ EACH STEP BEFORE ATTEMPTING TO INSTALL.

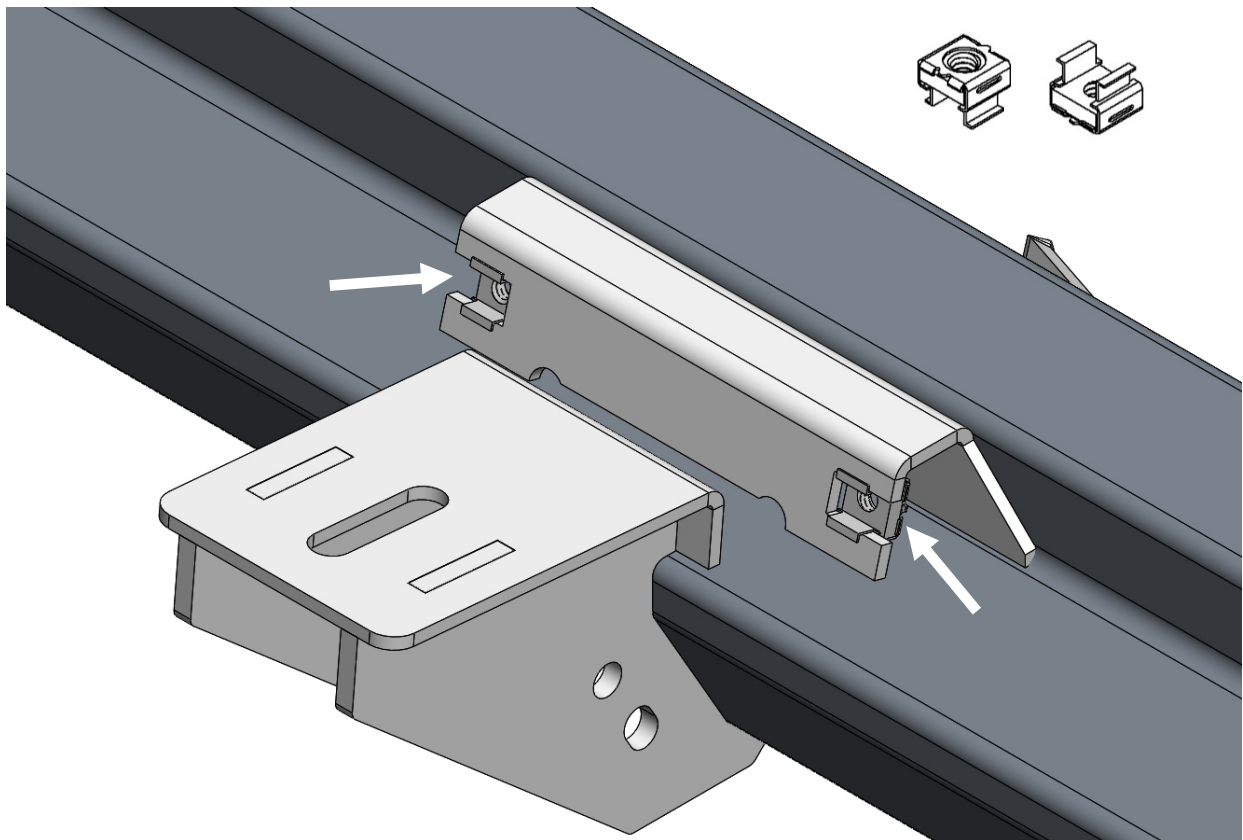
Step 1: Identify Driver and Passenger side Nerf-step.



Step 2: Depending on your cab model, you will have to identify which hardware you will have to use for the upper (3) mounts on the underside of the body. There will either be existing 8mm threaded holes for the M8 x 20mm hex head bolts or open slots for the 3/8" speed clips and 3/8"x 1 1/4" Hex bolts. *See fig. 2 and fig.3.*



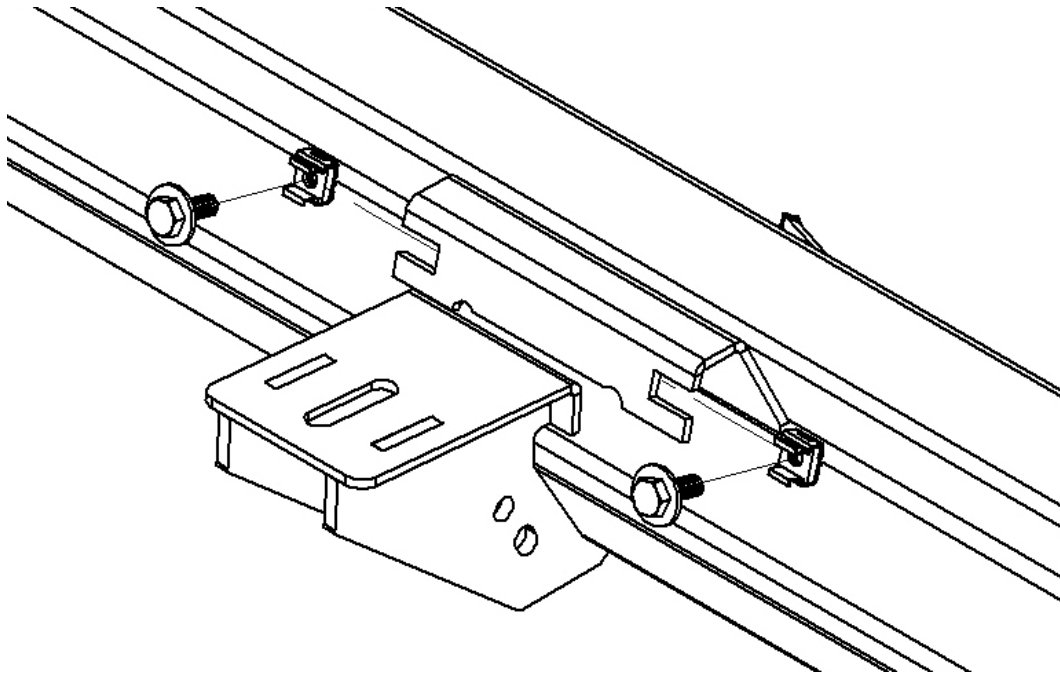
Step. 3 Starting with the passenger side step rail, install the supplied (x6) 1/4" snap nuts into the two notches in each mounting bracket.



Step. 4 Carefully raise step rail up to the pinch weld of the body and align brackets up with the factory mounting locations.

Step. 5 Depending on your hardware selection made in step 2, fasten the upper mounts and leave loose at this time.

Step. 6 Next, start all (x6) $\frac{1}{4}$ "x $\frac{3}{4}$ " hex bolts and (x6) M8 flat washers in the upper bracket mounts through the pinch weld and leave loose.



Step. 7 After final positioning, tighten all (x6) $\frac{1}{4}$ "x $\frac{3}{4}$ " hex bolts no more than 6 ft/lbs. torque.

Step. 8 Next, tighten all (x3) lower mounting positions to 17-20 Ft/lbs. torque.

Step. 9 Repeat steps 2-8 for passenger side.