



Installation Instructions

Vengeance Front

Product Number: D3651, D3652

Application: 2016+ Toyota Tacoma

SAFETY

Your safety and the safety of others is very important.

- In order to help you make informed decisions about safety, we have provided installation instructions and other information.
- These instructions alert you to potential hazards that could hurt you or others.
- Please do a job safety analysis (JSA) before each task to identify potential hazards for your situation and remove/protect against them.
- You must use your own good judgment, and take your time.

Read and understand all safety precautions and instructions before installing this product.

THIS PRODUCT IS FOR OFFROAD USE ONLY. ALL LIABILITY FOR INSTALLATION AND USE RESTS WITH THE OWNER.

CARELESS INSTALLATION AND OPERATION CAN RESULT IN SERIOUS INJURY OR EQUIPMENT DAMAGE.

Injury hazard

Failure to observe these instructions could lead to severe injury or death.

- Always** remove jewelry and wear eye protection.
- Always** use extreme caution when jacking up a vehicle for work. Set emergency brake and use tire blocks. Locate and use the vehicle manufacturers designated lifting points. Use jack stands.
- Always** use appropriate and adequate care in lifting components into place.
- Always** insure components will remain secure during installation and operation.
- Always** wear safety glasses when installing this kit. A drilling operation will cause flying metal chips. Flying chips can cause serious eye injury.
- Always** use extreme caution when drilling on a vehicle. Thoroughly inspect the area to be drilled (on both sides of material) prior to drilling, and relocate any objects that may be damaged.
- Always** use extreme caution when cutting and trimming during fitting.
- Always** tighten all nuts and bolts securely per installation instructions.
- Always** route electrical cables carefully. Avoid moving parts, components that become hot and rough or sharp edges.
- Always** insulate and protect all exposed wiring and electrical terminals.
- Always** perform regular inspections and maintenance on mounts and related hardware.

B365X_Rev_B



Installation Instructions

Vengeance Front

Product Number: D3651, D3652

Application: 2016+ Toyota Tacoma

I. Overview

Congratulations on your new purchase of the industries' best and most stylish front bumper for the 2016 Toyota Tacoma! This bumper has been **engineered** for strength.

Your bumper is designed in 3-D from digitized data, CNC laser cut, fabricated, and powder coated...all in the U.S.A.

Enjoy the fit and finish of a Toyota Tacoma front bumper from Fab Fours Inc.



B365X_Rev_B



Installation Instructions

Vengeance Front

Product Number: D3651, D3652

Application: 2016+ Toyota Tacoma

II. Tools Required

- 19mm (3/4"), 17mm, 14mm, 10mm Socket
- Phillips, Flat Blade Screw Driver
- Ratchet wrench, extensions
- Cut off wheel

III. Kit Contents

- D365X replacement bumper
- D365X Instruction manual



Installation Instructions

Vengeance Front

Product Number: D3651, D3652

Application: 2016+ Toyota Tacoma

IV. OE Bumper Removal

A. Using a M10 remove 6 (or eight for some models) fender flare bolts including 2 bolts hidden inside the fender flare lining. Also remove one pop pin from each fender lining. Save for reuse.



B. Carefully remove the fender flares by starting at one end and slowly pulling away from the truck to tear the tape.

C. Use a 10mm socket to remove lower valence (13 bolts).

D. Use a 10mm socket to unbolt 2 bolts and a flathead screw driver to remove 2 pins in the top of the grill. Remove grill until bumper install.

E. Remove 6 pushpins from top of the bumper.



Installation Instructions

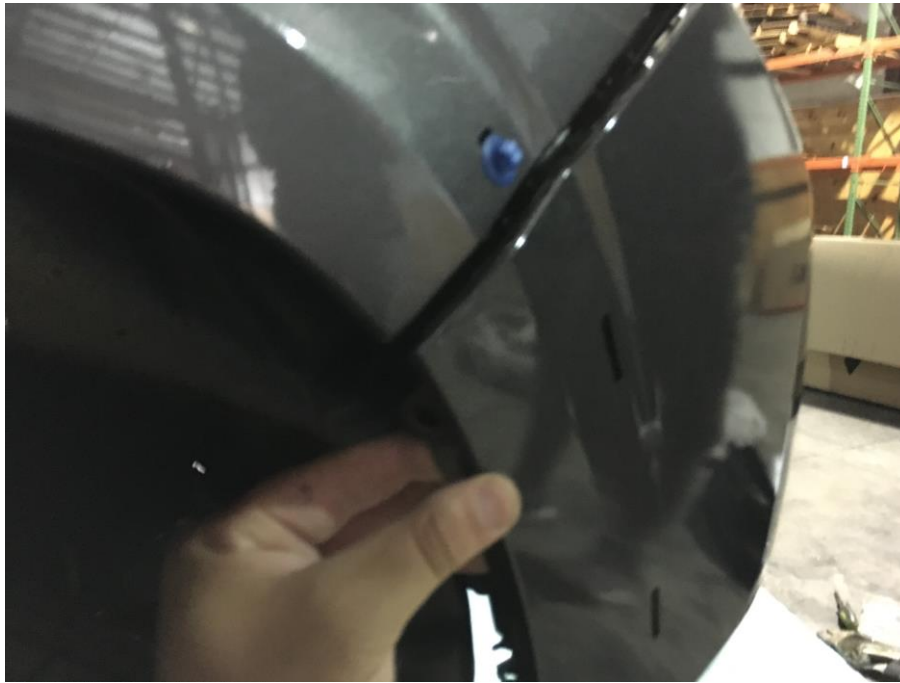
Vengeance Front

Product Number: D3651, D3652

Application: 2016+ Toyota Tacoma

F. Using a phillips head screwdriver to remove screws in the clear plastic pieces.

G. To remove the side of the bumper, flex the bumper out and then carefully pull away.



H. Remove 2 10mm bolts at the center bottom of bumper.

I. Disconnect fog light harness as well as the Christmas tree clips to the frame.



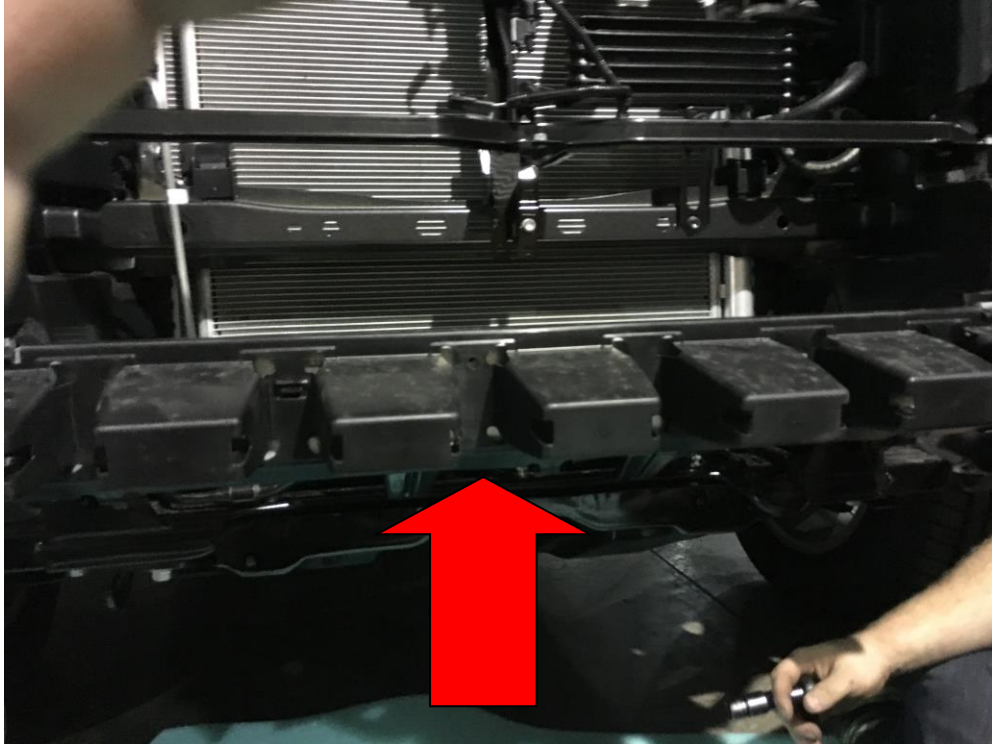
Installation Instructions

Vengeance Front

Product Number: D3651, D3652

Application: 2016+ Toyota Tacoma

J. Remove the black plastic from frame by depressing the clips. Remove 3 bolts holding the plastic frame to truck. Carefully pull away frame away from truck.



Remove black plastic piece.

K. Using a 10mm socket, remove the black plastic pieces to either side of the radiator.



Installation Instructions

Vengeance Front

Product Number: D3651, D3652

Application: 2016+ Toyota Tacoma

L. Using a 10mm socket and a flathead screwdriver, remove the bolt and pop pin holding on the plastic under the headlights. Remove the plastic piece and replace the bolt to secure the headlight.



Remove pin (circled) and remove bolt (arrow) then replace after removing plastic piece

Note: Due to the gaps that will be left for body flex, you may wish to use flat black spray paint on the bottom of the headlights and the back of the fender support. This will eliminate any color in the gaps between the bumper and the truck. Make sure to cover and tape before spraying.



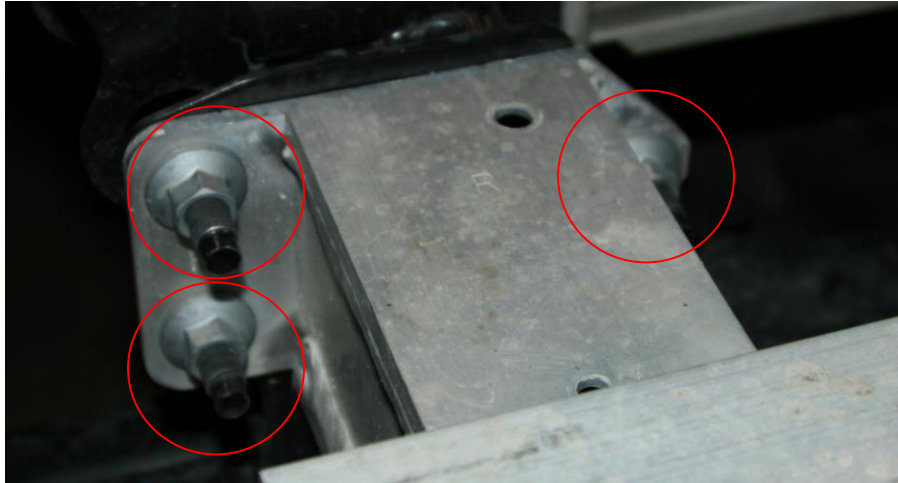
Installation Instructions

Vengeance Front

Product Number: D3651, D3652

Application: 2016+ Toyota Tacoma

M. Using a 14mm socket, remove six bolts holding the inner bumper support. It may be necessary to loosen the bolts inside the inner bumper support before removal.



N. Using a cutoff wheel, removed the clear plastic tabs under the headlights. Taping the headlights will help prevent damage to the truck.



B365X_Rev_B



Installation Instructions

Vengeance Front

Product Number: D3651, D3652

Application: 2016+ Toyota Tacoma

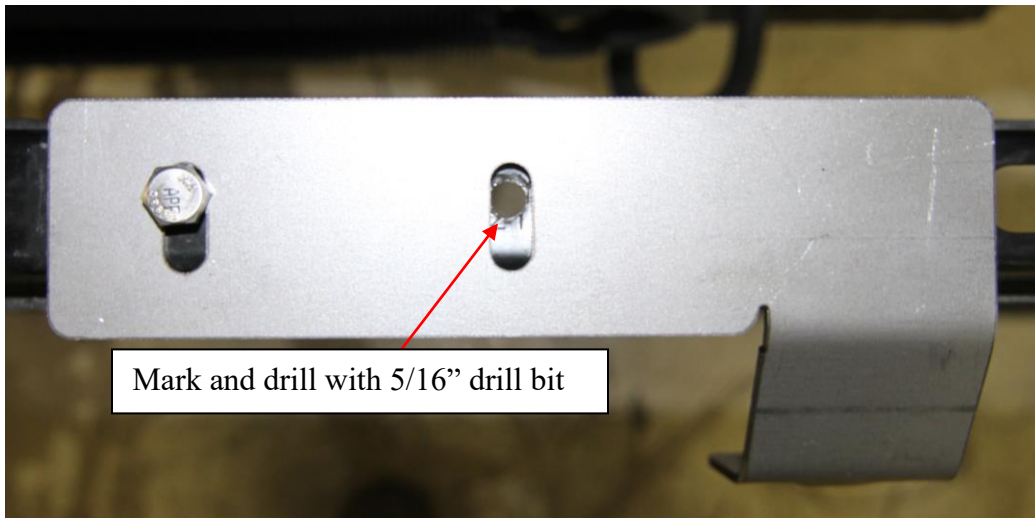
V. Fab Fours bumper installation

NOTE: If you have lights to install in your bumper, do so now. Use the manufacturer's instructions for the wiring.

NOTE: Fab Fours Recommends taping your vehicle to prevent damage to the paint when installing the bumper.

NOTE: This bumper comes with two sets of grill brackets. 21192-01 and 21192-02 are for ALL Tacoma grills except the TRD Pro; use 21192-03 and 21192-04 instead.

A. Loosely install the provided grill bracket on driver side grill brace. Using a center punch mark the outer hole location and drill using 5/16" drill bit.





Installation Instructions

Vengeance Front

Product Number: D3651, D3652

Application: 2016+ Toyota Tacoma

B. Once hole is drill you can loosely install both brackets using provided 1/4" hardware.



C. With both brackets loosely installed you can now re-install grill. Once the grill is re-installed, you can fasten the bracket to the grill by lining up the slot on bracket with the cylindrical plastic extrusion on back side of grill and secure the bracket to grill using the provided self-tapping screws.



B365X_Rev_B



Installation Instructions

Vengeance Front

Product Number: D3651, D3652

Application: 2016+ Toyota Tacoma

D. Once self-tapping screw is installed you can now tighten all 1/4" hardware.

E. Put fender flares back up to truck and mark the necessary cut line to follow the fender. Then cut to fit the new bumper. Be cautious, about removing too much material. Replace screws in fender well and replace factory tape if desired.





Installation Instructions

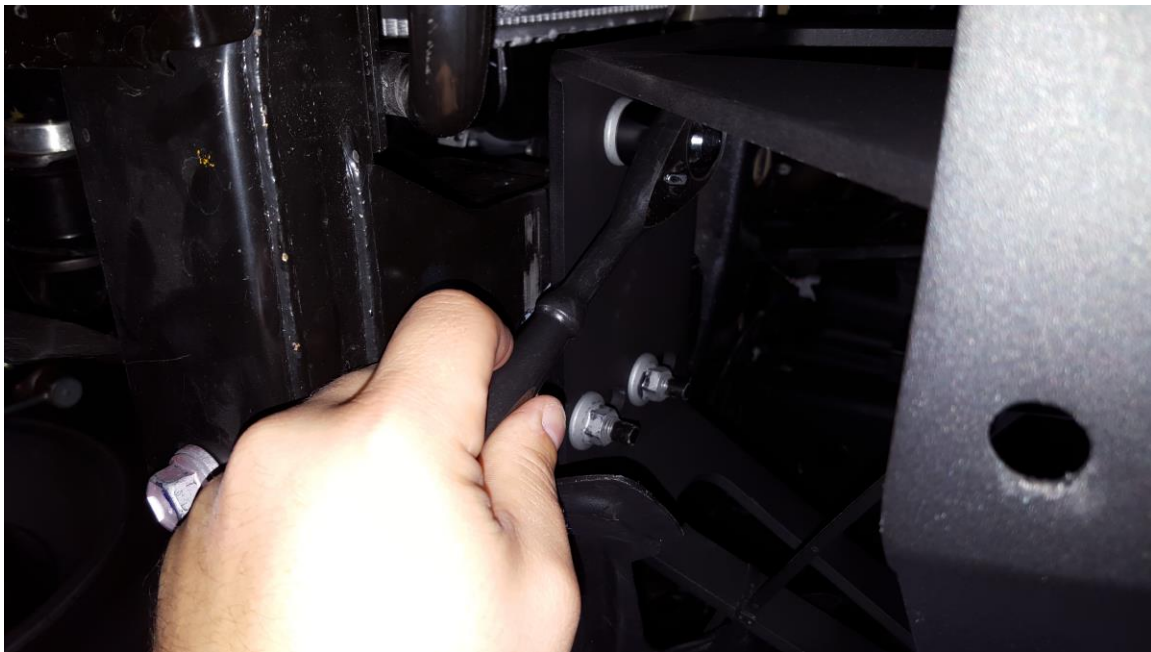
Vengeance Front

Product Number: D3651, D3652

Application: 2016+ Toyota Tacoma



F. Mount bumper using OEM 14mm nuts. Do not fully tighten.



B365X_Rev_B



Installation Instructions

Vengeance Front

Product Number: D3651, D3652

Application: 2016+ Toyota Tacoma

G. Adjust bumper so that both sides are even but allow for a minimum of ¼" of clearance to allow for body flex. Failure to leave this gap may cause damage to your vehicle.

H. Fully tighten the bolts to the bumper

I. With bumper fully tightened install lower support brackets (21193 and 21194) using provided ½" hardware. Line up brackets with the outer most holes on the bottom of bumper.





Installation Instructions

Vengeance Front

Product Number: D3651, D3652

Application: 2016+ Toyota Tacoma

J. Next line up bracket with outer most holes on crash bar. Once all hardware is loosely installed you can tighten all 1/2" hardware.

