



Installation Instructions

Toyota Tacoma Rear

Product Number: W3650, W3651

Application: 2016+ Tacoma

SAFETY

Your safety and the safety of others is very important.

- In order to help you make informed decisions about safety, we have provided installation instructions and other information.
- These instructions alert you to potential hazards that could hurt you or others.
- Please do a job safety analysis (JSA) before each task to identify potential hazards for your situation and remove/protect against them.
- You must use your own good judgment, and take your time.

Read and understand all safety precautions and instructions before installing this product.

**THIS PRODUCT IS FOR OFFROAD USE ONLY. ALL LIABILITY FOR
INSTALLATION AND USE RESTS WITH THE OWNER.**

**CARELESS INSTALLATION AND OPERATION CAN RESULT IN SERIOUS INJURY
OR EQUIPMENT DAMAGE.**

**SENSORS' FIELD OF VIEW WILL BE ALTERED WITH USE OF THE
REPLACEMENT BUMPER.**

Injury hazard

Failure to observe these instructions could lead to severe injury or death.

- Always** remove jewelry and wear eye protection.
- Always** use extreme caution when jacking up a vehicle for work. Set emergency brake and use tire blocks. Locate and use the vehicle manufacturers designated lifting points. Use jack stands.
- Always** use appropriate and adequate care in lifting components into place.
- Always** insure components will remain secure during installation and operation.
- Always** wear safety glasses when installing this kit. A drilling operation will cause flying metal chips. Flying chips can cause serious eye injury.
- Always** use extreme caution when drilling on a vehicle. Thoroughly inspect the area to be drilled (on both sides of material) prior to drilling, and relocate any objects that may be damaged.
- Always** use extreme caution when cutting and trimming during fitting.
- Always** tighten all nuts and bolts securely per installation instructions.
- Always** route electrical cables carefully. Avoid moving parts, components that become hot and rough or sharp edges.
- Always** insulate and protect all exposed wiring and electrical terminals.
- Always** perform regular inspections and maintenance on mounts and related hardware.





Installation Instructions

Toyota Tacoma Rear

Product Number: W3650, W3651

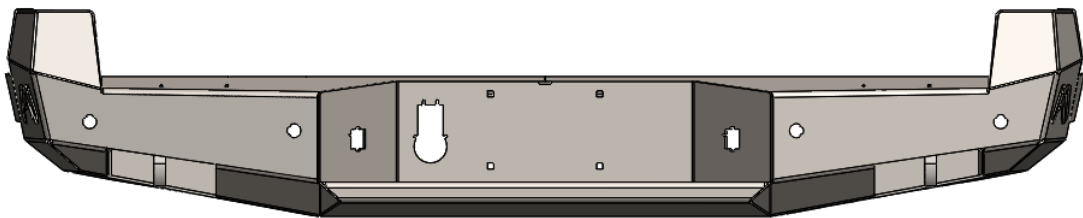
Application: 2016+ Tacoma

I. Overview

Congratulations on your new purchase of the industries' best and most stylish Rear Bumper available for the 2016 and newer Toyota Tacoma! This bumper has been **engineered** for strength while keeping the weight down!

Your Rear Bumper designed in 3-D from digitized data, CNC laser cut, fabricated, and powder coated... all in the U.S.A.

Enjoy the fit and finish of a quality Tacoma Rear Bumper from Fab Fours Inc.





Installation Instructions

Toyota Tacoma Rear

Product Number: W3650, W3651

Application: 2016+ Tacoma

II. Tools Required

- Socket Wrench with Extension
- Breaker Bar
- 19mm, 17mm, 12mm and 9mm Wrenches and Sockets
- Flat and Phillips Head Screw Drivers
- Allen wrench set

III. Removal of Stock Bumper

A. Disconnect the sensor, light, and towing harnesses.



B. Remove the license plate. Remove the pin behind the license plate.

C. Remove the trailer plug and license plate lights.

D. Remove the plastic center piece of the bumper by removing two push pins under the center step and pushing up the clips that secure it into place.



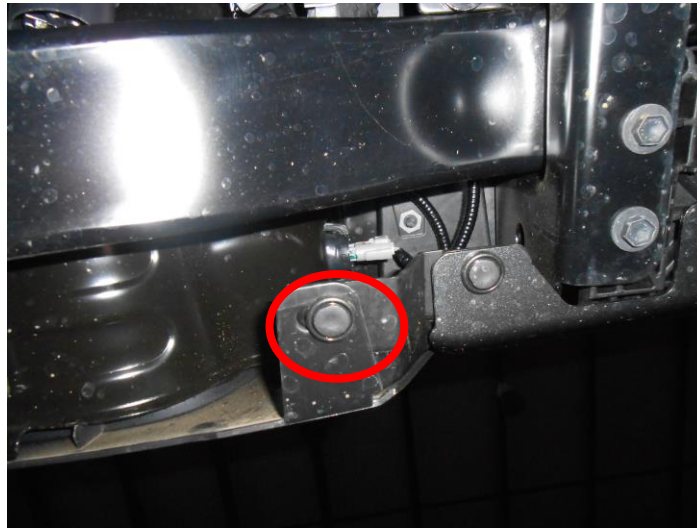


Installation Instructions

Toyota Tacoma Rear

Product Number: W3650, W3651

Application: 2016+ Tacoma



E. Use a 12mm socket to remove 10 bolts on the metal piece of the lower bumper.





Installation Instructions

Toyota Tacoma Rear

Product Number: W3650, W3651

Application: 2016+ Tacoma

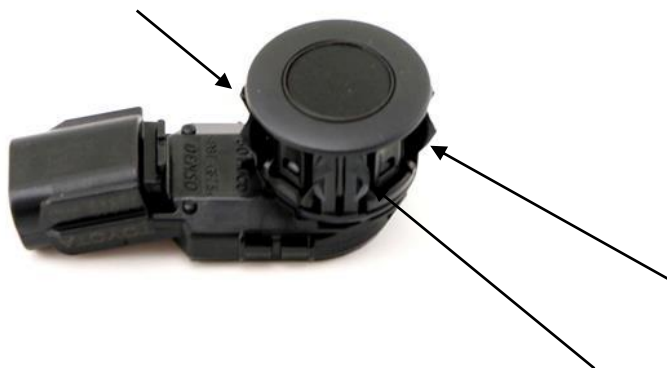
F. Remove corner plastic piece by removing two 12mm bolts on the underside of the bumper.



G. Remove gold clip that holds the corner cover.

I. Remove cover clips to pull off the corner cover.

J. Remove the sensors from the bumper by gently pushing them out from the inside and rotating the connector side out. If sensors don't come out easily push tabs (see arrows below) in while pushing out on the sensor. Do not remove sensor from housing. Sensors should look like the image below. Save for the Fab Fours bumper installation if equipped.





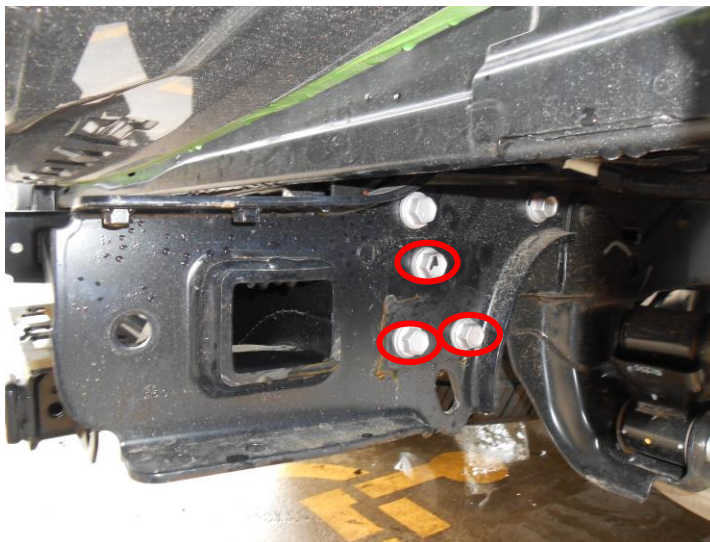
Installation Instructions

Toyota Tacoma Rear

Product Number: W3650, W3651

Application: 2016+ Tacoma

K. Remove 6 (3 per side) 17mm bolts indicated below holding the receiver to the frame.



IV. Pre-Installation

- A. Remove Fab Fours bumper from the shipping carton and lay all items out on a blanket to prevent damage.
- B. Install OEM license plate lights.
- C. For sensor equipped vehicles: Install sensor from the outside of the bumper by inserting the connector in first and rotating until the sensor is fully installed. **DO NOT EPOXY AT THIS TIME.**





Installation Instructions

Toyota Tacoma Rear

Product Number: W3650, W3651

Application: 2016+ Tacoma

V. Rear Bumper Installation

NOTE: The Following Installation steps apply to the installation of the. **PLEASE READ THE ENTIRE MANUAL BEFORE ATEMPTING INSTALLATION!** Ignoring these steps will increase your probability of scratching the vehicle during product Installation!

A. Attach the supplied intermediate brackets with the OEM hitch mounting bolts and a 17mm socket. Do not fully tighten.



B. With the help of two others mount the bumper to the truck and use the 1/2" stud plates and hardware provided on to the intermediate brackets. Do not fully tighten.

C. Level and align the bumper in relation to the truck bed. Fully tighten all fasteners.

D. Very carefully open the tailgate watching the bottom edge of the tailgate in relation to the top of the bumper making sure they do not come in contact. Also make sure to allow space between the tailgate and the top of the





Installation Instructions

Toyota Tacoma Rear

Product Number: W3650, W3651

Application: 2016+ Tacoma

bumper when tailgate is fully open. If required, loosen the frame/ bumper bolts and adjust alignment of the bumper.

E. Install trailer plug receptacle. The stock plug receptacle must be drilled with a 7/32 drill bit (1/4 is acceptable) using the shown impressions in the receptacle as guides. Attach with the provided #8 hardware.



F. Install supplied license plate plastic nut inserts and license plate.

G. Secure all loose wiring and harnesses to the frame or bumper with zip ties. If necessary remove harness with trailer plug connector from OEM mount locations to allow for trailer plug connection. Dependent on truck model/bed length, you may have to pull extra harness length from under the cab.

H. FOR SENSOR BUMPER INSTALLATION ONLY: Install the sensor harness back into the bumper and plug the harness into both the sensors and truck side connector. Test the sensors to ensure that the truck does not read the ground or give off any errors. Then carefully apply epoxy ensuring it does not touch the sensor itself (only the housing).

I. Enjoy your bumper from Fab Fours!





Installation Instructions

Toyota Tacoma Rear

Product Number: W3650, W3651

Application: 2016+ Tacoma

Maintenance/Care

- Periodically check and tighten all fasteners.
- Stripped, fractured, or bent bolts or nuts need to be replaced.
- After washing of the vehicle make sure to fully dry all surfaces

